

**DATE**     **APR 04 2024**

**C.D. 11**

Honorable City Council  
of the City of Los Angeles

**AVIATION BOULEVARD AND ARBOR VITAE STREET NO. 1  
STREET LIGHTING MAINTENANCE ASSESSMENT DISTRICT**

---

This report submits the proposed Ordinance of Intention to institute maintenance assessment proceedings for the above street lighting project.

**RECOMMENDATIONS**

1. Council adopt this report and the Ordinance of Intention, and that the proceedings be conducted in accordance with Sections 6.95 - 6.127 of the Los Angeles Administrative Code, Section 53753 of the California Government Code, and Proposition 218 (Articles XIII C and XIII D of the California Constitution). This includes Council holding a Public Hearing for the proposed District Diagram with City page numbers 15812 thru 15816.
2. Upon Council adoption of the Ordinance of Intention, the Bureau of Street Lighting be instructed to: Mail notices of the assessment ballot proceedings, and Mail assessment ballots (as required by Prop. 218) to the property owners in the lighting district.
3. Upon completion of Item 2 above, the City Clerk be instructed to conduct the assessment ballot proceedings (i.e. count, certify, and report the results of the assessment ballot proceedings to the Council).
4. Following the conclusion of the final public hearing, if a project has weighted "YES" votes equal to, or in excess of weighted "NO" votes, the Council shall deny the appeals, confirm the maintenance assessments, and adopt the Final Ordinance levying the assessments. If the weighted "NO" votes are in excess of weighted "YES" votes, Council will abandon the lighting district and proceedings in accordance with Proposition 218; and the affected street lighting system shall be removed from service or not be constructed.
5. A copy of this report be provided to each affected Council office and the Mayor's Office of Economic Development.

The passage of Proposition 218 on November 5, 1996, requires a vote of the property owners prior to Council confirming and levying the assessments for maintenance. Upon adoption of the transmitted Ordinance of Intention, the Council shall set a date for hearing appeals and the last day to receive completed assessment ballots. A hearing to be held by the Board of Public Works will be scheduled at least one week prior to the date of the public hearing for the City Council to review and resolve any appeals concerning the proposed maintenance assessments – as specified in the Engineer's Report. If the assessment ballot proceeding as required by Proposition 218 approves these assessments, the City Council may confirm and levy the assessments. If levied, the administration of this district may be combined with that of another district or districts in the future as provided in the Ordinance of Intention. Protests that are received, as described in the Administrative Code, are for the consideration of the Council, but are not binding. Only a weighted majority vote against the assessment is binding.

The assessments to be levied to pay for the cost and expenses of the work or improvements in the proposed AVIATION BOULEVARD AND ARBOR VITAE STREET NO. 1 Street Lighting Maintenance Assessment District (or Sidewalk Maintenance Assessment District) fall within the (e)7 exemption of Prop 26. As set forth in the accompanying Ordinance of Intention, said assessments will be imposed in accordance with the provisions of Article XIID of the California Constitution.

In accordance with Council Policy adopted on December 11, 1998, the Bureau of Street Lighting will cast ballots in favor of the assessments for all Council controlled public properties in the district.

### **SUMMARY**

|                     |   |
|---------------------|---|
| TOTAL STREETLIGHTS: | <b>198</b>                                |
| AFFECTED PARCELS:   | <b>27</b>                                 |
| TOTAL ASSESSMENTS:  | <b>\$105,763.93</b>                       |
| TAX YEAR:           | <b>2023/2024</b>                          |
| TYPE OF PROJECT:    | <b>CITY OF LOS ANGELES – LAWA PROJECT</b> |

### **TRANSMITTALS**

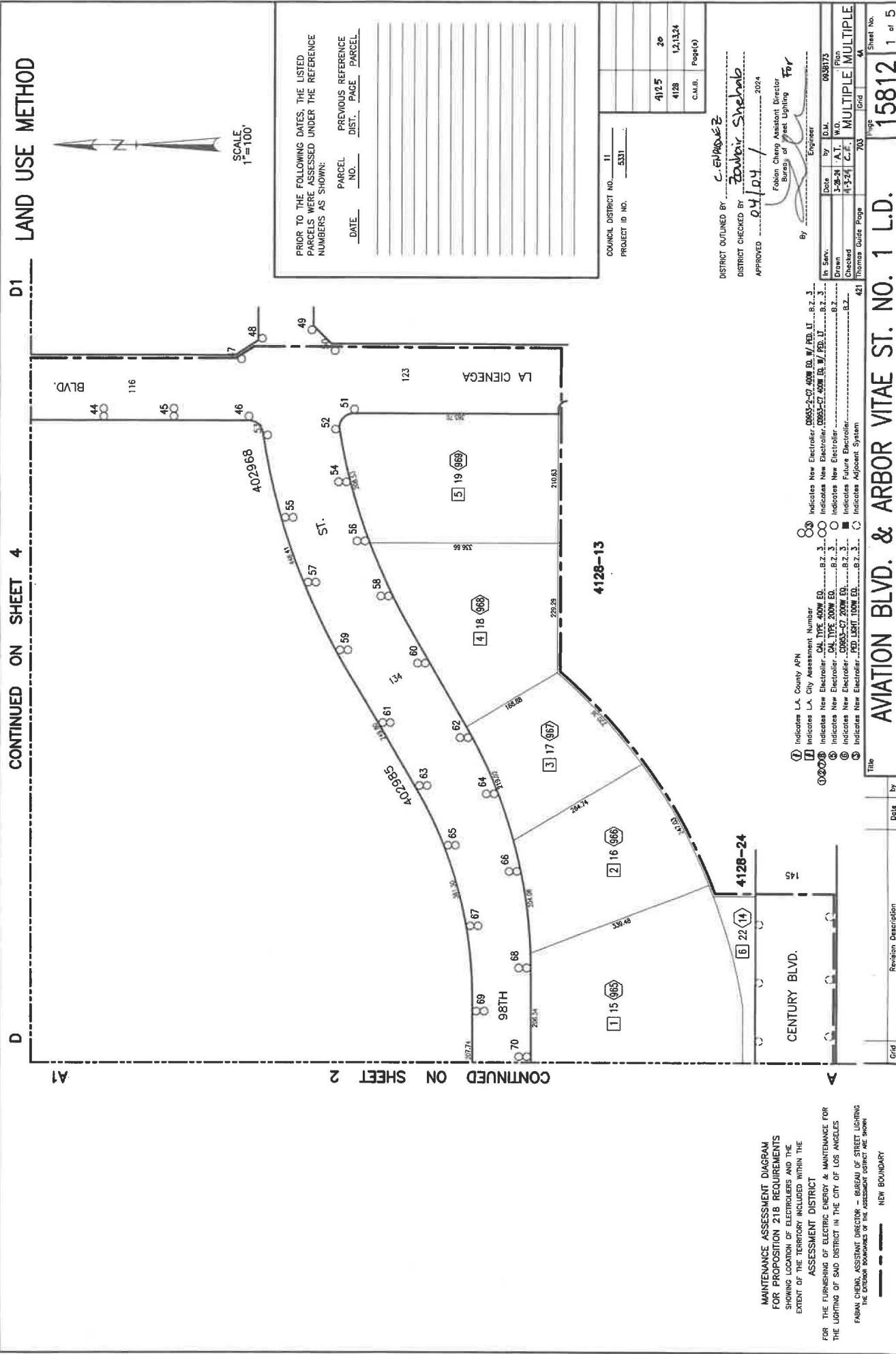
1. Ordinance of Intention, approved as to form and legality by the City Attorney, for the proposed assessment district.
2. Engineer's Report as required by Proposition 218.
3. Proposed assessment roll.
4. Diagram delineating those lands proposed to be assessed.

Report prepared by:  
Assessment Engineering Division  
Proposition 218 Compliance Section  
Chris Enriquez, SLE Associate III  
Ruben Flamenco, P.E., Division Manager

Respectfully submitted,



Miguel Sangalang, Executive Director  
Bureau of Street Lighting *FB*



CONTINUED ON SHEET 4

D1

D

A1

CONTINUED ON SHEET 2

2

4128-13

4128-24

4128-15

4128-16

4128-17

4128-18

4128-19

4128-20

4128-21

4128-22

4128-23

4128-24

4128-25

4128-26

4128-27

LAND USE METHOD

SCALE

1"=100'

4125

4126

4127

4128

4129

4130

4131

4132

4133

4134

4135

4136

4137

4138

4139

4140

4141

4142

PRIOR TO THE FOLLOWING DATES, THE LISTED PARCELS WERE ASSESSED UNDER THE REFERENCE NUMBERS AS SHOWN:

DATE

PARCEL NO.

PREVIOUS REFERENCE

DIST.

PAGE

PARCEL

4125

4126

4127

4128

4129

4130

4131

4132

4133

4134

4135

4136

4137

4138

COUNCIL DISTRICT NO. 11

PROJECT ID NO. 5331

4125

4126

4127

4128

4129

4130

4131

4132

4133

4134

4135

4136

4137

4138

4139

4140

4141

4142

4143

DISTRICT OUTLINED BY C. ENRIQUEZ

DISTRICT CHECKED BY Zouhair Shehob

APPROVED 04/04/2024

Fabian Cheng Assistant Director

Bureau of Street Lighting

By

Engineer

08/07/23

4125

4126

4127

4128

4129

4130

4131

4132

4133

4134

4135

4136

4137

MAINTENANCE ASSESSMENT DIAGRAM FOR PROPOSITION 218 REQUIREMENTS

SHOWING LOCATION OF ELECTROLINERS AND THE EXTENT OF THE TERRITORY INCLUDED WITHIN THE ASSESSMENT DISTRICT

FOR THE FURNISHING OF ELECTRIC ENERGY & MAINTENANCE FOR THE LIGHTING OF SAID DISTRICT IN THE CITY OF LOS ANGELES

FABIAN CHENG, ASSISTANT DIRECTOR - BUREAU OF STREET LIGHTING

THE EXTERIOR BOUNDARIES OF THE ASSESSMENT DISTRICT ARE SHOWN

NEW BOUNDARY

4125

4126

4127

4128

4129

4130

4131

4132

4133

4134

4135

4136

4137

4138

4139

Grid

Revision Description

Date

by

15812

1 of 5

15812

15812

15812

15812

15812

15812

15812

15812

15812

15812

15812

15812

15812

15812

15812

AVIATION BLVD. & ARBOR VITAE ST. NO. 1 L.D.

15812

15812

15812

15812

15812

15812

15812

15812

15812

15812

15812

15812

15812

15812

15812

15812

15812

15812

15812

15812

15812

15812

15812

15812

15812

15812

15812

15812

15812

15812

15812

15812

15812

15812

15812

15812

15812

15812

15812

15812

15812

15812

15812

15812

15812

15812

15812

15812

15812

15812

15812

15812

15812

15812

15812

15812

15812

15812

15812

15812

15812

15812

15812

15812

15812

15812

15812

15812

15812

15812

15812

15812

15812

15812

15812

15812

15812

15812

15812

15812

15812

15812

15812

15812

15812

15812

15812

15812

15812

15812

15812

15812

15812

15812

15812

15812

15812

15812

15812

15812

15812

15812

15812

15812

15812

15812

15812

15812

15812

15812

15812

15812

15812

15812

15812

15812

15812

15812

15812

15812

15812

15812

15812

15812

15812

15812

15812

15812

15812

15812

15812

15812

15812

15812

15812

15812

15812

15812

15812

15812

15812

15812

15812

15812

15812

15812

15812

15812

15812

15812

15812

15812

15812

15812

15812

15812

15812

15812

15812

15812

15812

15812

15812

15812

15812

15812

15812

15812

15812

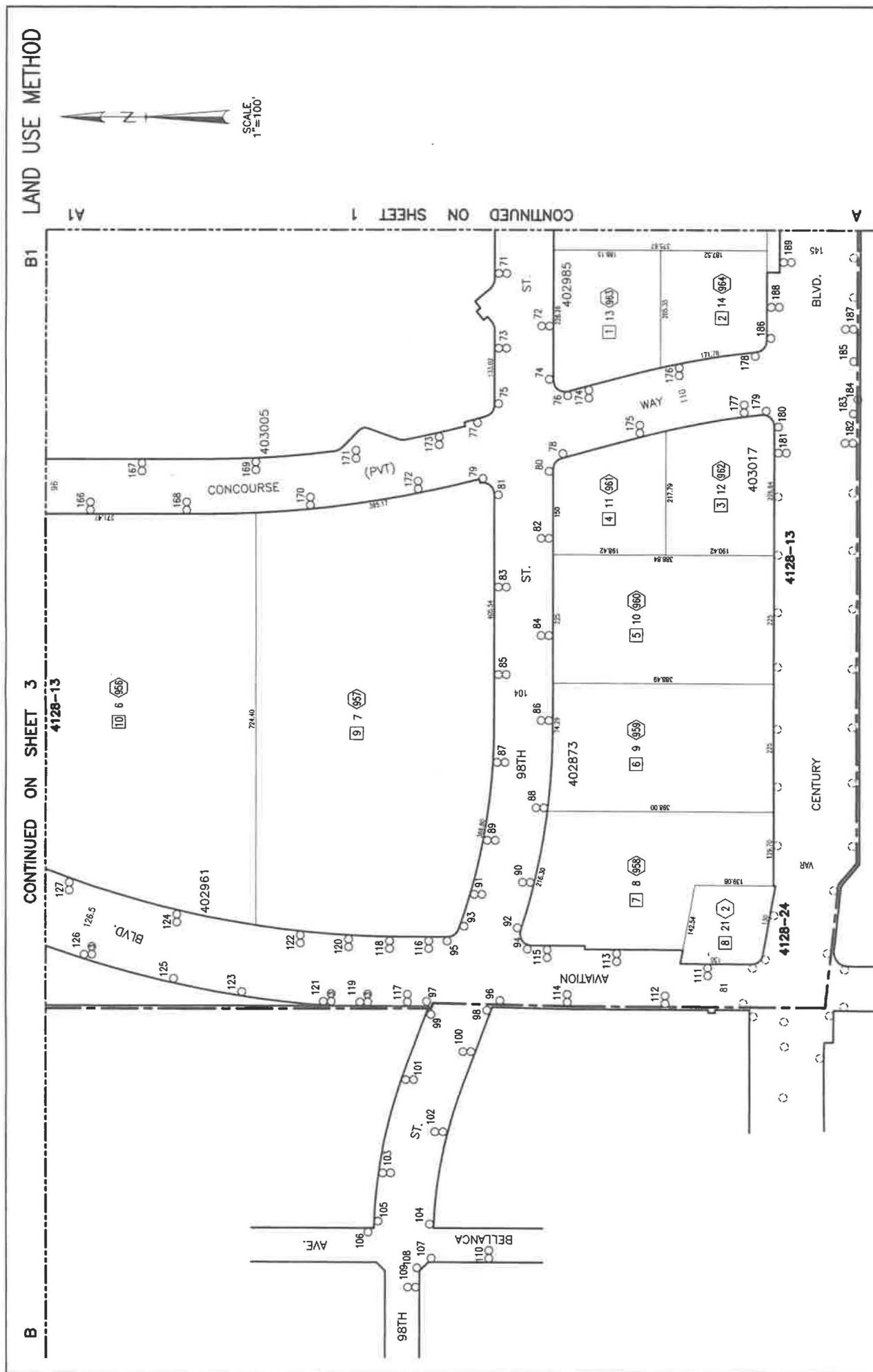
15812

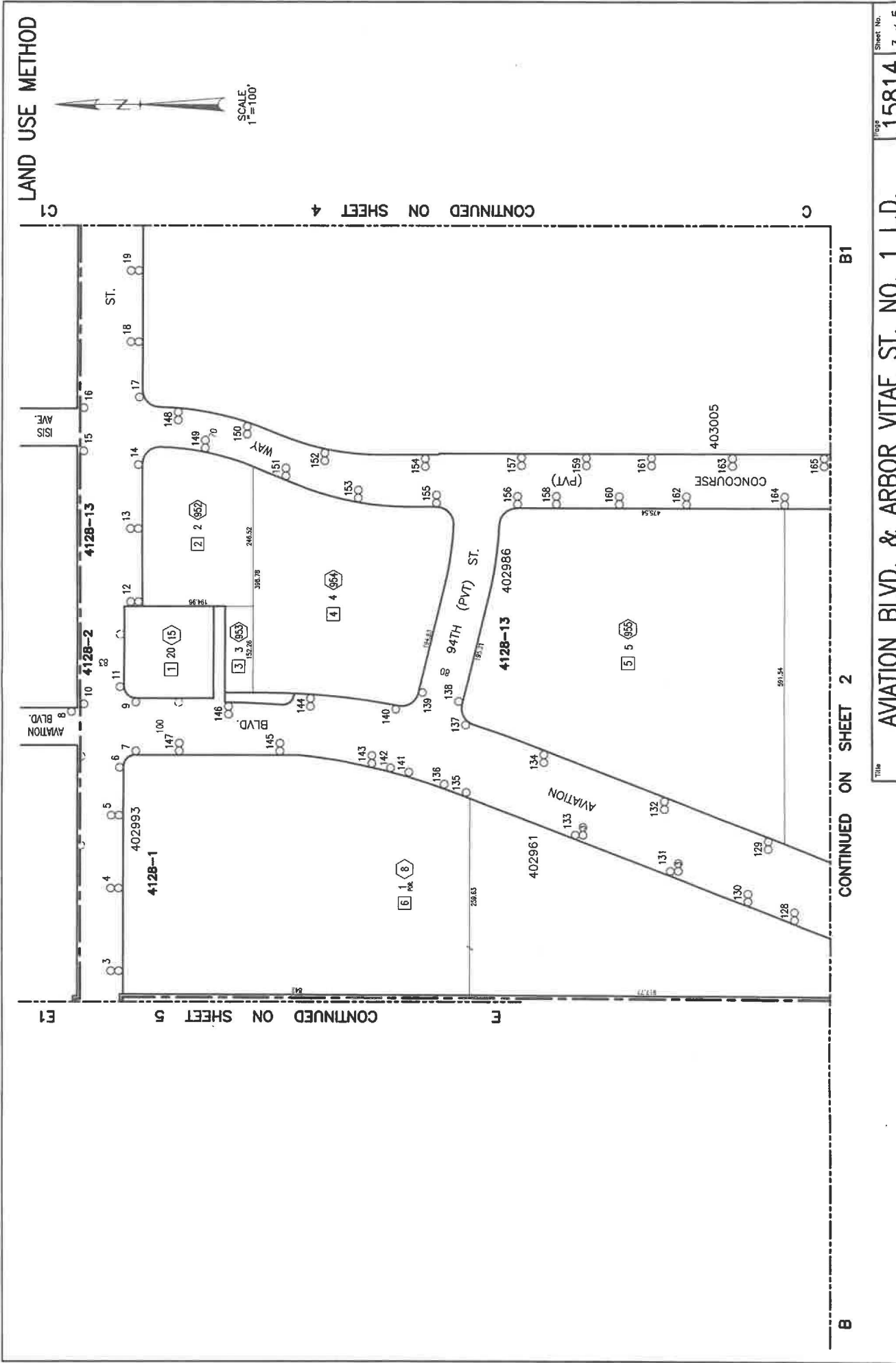
15812

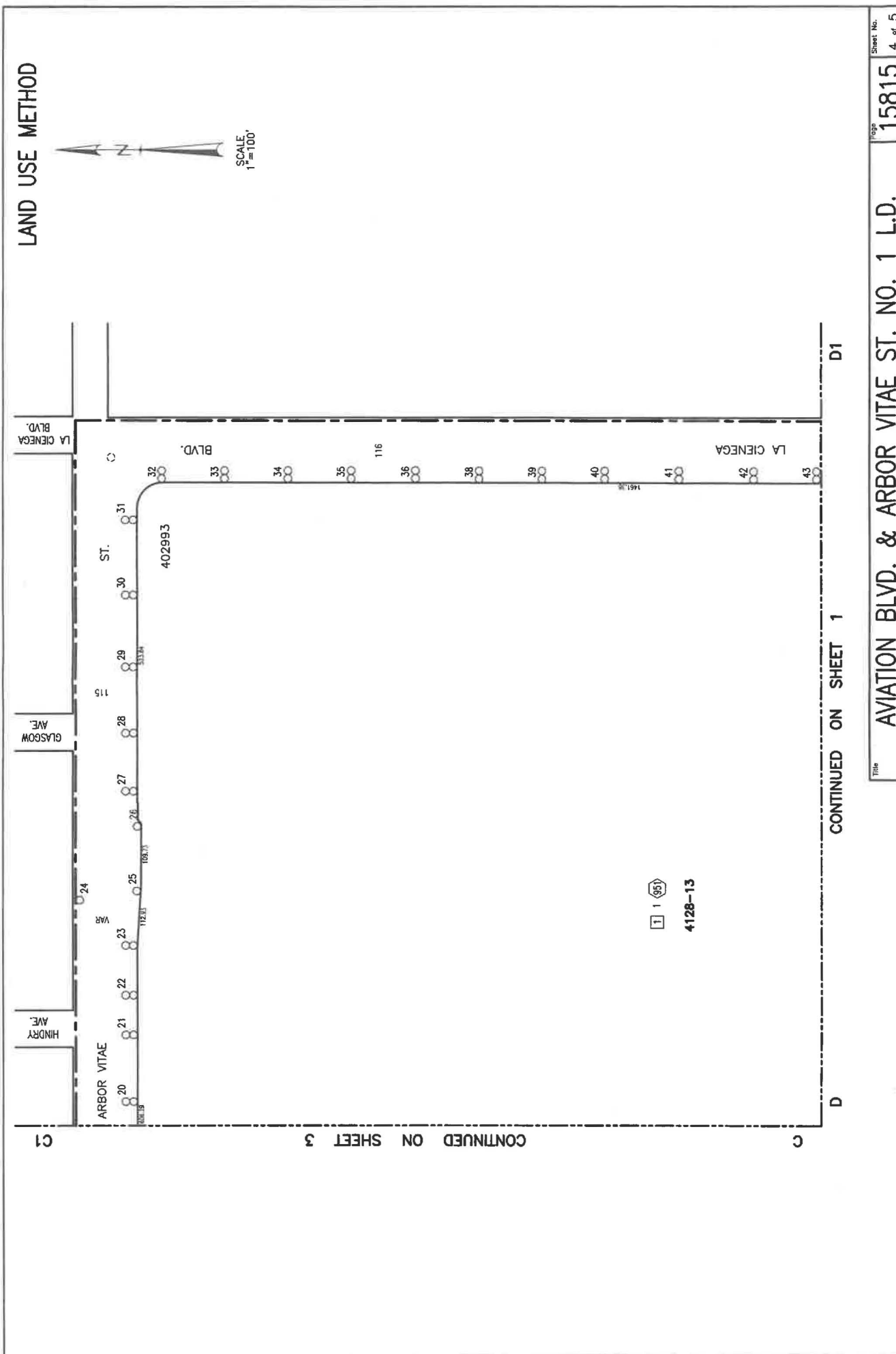
15812

15812

15







LAND USE METHOD



SCALE  
1"=100'

LA CIENEGA  
BLVD.

GLASGOW  
AVE.

HINDRY  
AVE.

ARBOR VITAE

ST.

402993

116

LA CIENEGA

D1

CONTINUED ON SHEET 1

D

CONTINUED ON SHEET 3

1 1 (95)

4128-13

# LAND USE METHOD

