

Department of Public Works

Bureau of Engineering
Report No. 3

April 26, 2024
CD No. 11

REVISE THE TASK FOR SOLICITATION No. ED21-033 TO SWCA ENVIRONMENTAL CONSULTANTS FOR CONTINUED ENVIRONMENTAL MONITORING SERVICES FOR THE ASILOMAR BOULEVARD STABILIZATION PROJECT (WORK ORDER No. E1907673, CONTRACT No. C-139083)

RECOMMENDING THE BOARD OF PUBLIC WORKS (BOARD):

AUTHORIZE the City Engineer to issue a revision of the task for Task Order Solicitation (TOS) No. ED21-033 to SWCA Environmental Consultants (SWCA), increasing the budget authority from \$125,741.73 to \$299,800, including contingency, for continued environmental support services, including biological, cultural resources, and Native American monitoring for the Asilomar Boulevard Stabilization project (Project).

TRANSMITTALS

1. Copy of the Bureau of Engineering (BOE) and Bureau of Contract Administration (BCA) Joint Report No. 1, adopted September 24, 2021, authorizing personal services contracts with 11 Pre-Qualified On-Call (PQOC) Environmental Documentation Consultants and 10 Environmental Specialty Studies Consultants.
2. Copy of the TOS No. ED21-033, dated March 6, 2023.
3. Copy of the email from the Board Commissioner approving Emergency Authorization to raise the cost ceiling for TOS ED21-033, dated February 8, 2024.
4. Copy of the Business Inclusion Program Waiver approval from the Mayor's Office for TOS ED21-033, dated March 7, 2023.

DISCUSSION

Background

On September 24, 2021, the Board approved the PQOC list of consultants to provide environmental documentation services on an as-needed basis (Transmittal No. 1). The contract with SWCA was executed on September 29, 2021 and will expire on September 28, 2026.

The Project is currently in construction and in the process of installing three hundred and forty-six (346) 4.5-foot-diameter by 90-foot-deep columns within a 7,881-square-foot

section of the City's right-of-way using Cement Deep Soil Mixing (CDSM) technique to stabilize Asilomar Boulevard, between Almar Avenue and Wynola Street in Pacific Palisades, Council District 11. Sensitive native plant species, including coastal sage scrub and lemonade berry scrub, exist in proximity to the Project site and may support nesting birds. The site is also sensitive for cultural resources. Per requirements of the Project's California Environmental Quality Act (CEQA) Environmental Impact Report (EIR) and the Coastal Development Permit (CDP), biological, cultural, and Native American monitoring is required during the entire construction period (Transmittal No. 2).

On May 2, 2023, the BOE hired SWCA under TOS No. ED21-033 to prepare biological and cultural resources monitoring management plans, which were conditions by the California Coastal Commission prior to their issuance of the Project's CDP. The BOE issued a Notice to Proceed (NTP) to SWCA for a not-to-exceed amount of \$125,741.73, to develop the required plans and begin monitoring activities upon the start of construction. The BOE did not know the extent of the required hours of Native American monitoring or the number of Native American monitors that would be required, until after the Coastal Commission issued the CDP on June 29, 2023. On February 8, 2024, to comply with the monitoring and reporting required during the entire construction period, an emergency authorization to raise the cost ceiling for TOS ED21-033 from \$125,741.73 to \$299,800, including contingency, was requested and the approval was received from the BOE Board liaison Commissioner Villegas (Transmittal No. 3).

Business Inclusion Program (BIP)

On March 7, 2023, the BOE received approval from the Mayor's Office to waive the BIP requirements for this task. Approval to waive the BIP requirements was granted because it is in the City of Los Angeles' (City's) best interest to comply with environmental mitigation, consisting of biological, cultural, and Native American tribal monitoring and reporting, required per the CEQA EIR and the terms of the CDP. This highly specialized task has been led by a registered professional archaeologist who meets specialized criteria under the Secretary of the Interior's Standards and includes two culturally affiliated tribes that are conducting Native American monitoring as subcontractors to SWCA. The highly specialized nature of the work and the requirement for cultural affiliation of the Native American monitors, does not provide opportunities to hire other subcontractors for this work (Transmittal No. 4). However, SWCA is being encouraged to utilize BIP subconsultants whenever possible.

Contractor Performance Evaluation

In accordance with Division 10, Chapter 1, Article 13 of the Los Angeles Administrative Code, the appropriate City personnel responsible for the quality control of this personal services contract shall submit Contractor Performance Evaluation Reports to the BCA, Special Research and Investigation Section, upon completion of the contract.

Department of Public Works
Bureau of Engineering
Report No. 3

April 26, 2024
Page 3

STATUS OF FUNDING

Funding in the amount of \$299,800, including contingency, is available for the revision to TOS No. ED21-033 in the General Fund, Fund No. 100, Department No. 54, Appropriation Unit No. 00W875.

The City's liability under this contract shall only be to the extent of the present City appropriation to fund the contract. However, if the City shall appropriate funds for any succeeding years, the City's liability shall be to the extent of such appropriation, subject to the terms and conditions of the contract.

(MEM RMK PS JC JF)

Report reviewed by:

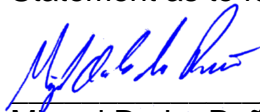
BOE (GED, PAC, and ADM)

Report prepared by:

Environmental Management Group

Maria Martin
Environmental Affairs Officer
Phone No. (213) 485-5753

Statement as to funds approved by:



Miguel De La Peña, Director
Office of Accounting
Fund Ref. 100/54/00W875/\$299,800
Date: 4/12/2024

MEM/03-2024-0047_EMG.gva

Questions regarding this
report may be referred to:
Maria Martin, Environmental Affairs Officer
E-mail: maria.martin@lacity.org
Phone No. (213) 485-5753
and/or
Michael Womack, Project Manager
E-mail: michael.womack@lacity.org
Phone No. (213) 847-0494

Respectfully submitted,



Ted Allen, PE
City Engineer

NOTE
EXECUTIVE DIRECTIVE 3 APPROVAL WAS RECEIVED FROM THE MAYOR ON
SEPTEMBER 24, 2021; THEREFORE, THE REPORT WAS NOT REFERRED TO AND
NOTED FOR THE RECORD.

BPW-2024-0249
BPW-2021-0666

***see page 20 & 21 for**
drawing results

ADOPTED BY THE BOARD
PUBLIC WORKS OF THE CITY
of Los Angeles California

SEP 24 2021


Executive Officer
Board of Public Works

Department of Public Works

Bureau of Engineering
Bureau of Contract Administration
Joint Report No. 1

September 24, 2021
CD Nos. ALL

EXECUTE PERSONAL SERVICES CONTRACTS WITH 11 PRE-QUALIFIED ON-CALL ENVIRONMENTAL
DOCUMENTATION CONSULTANTS AND 10 ENVIRONMENTAL SPECIALTY STUDIES CONSULTANTS
WORK ORDER No. EXX01014

RECOMMENDING THE BOARD OF PUBLIC WORKS (BOARD):

1. APPROVE and FORWARD this report with transmittals to the Mayor requesting that he approve and authorize the President or two Commissioners of the Board to execute the Personal Services Contracts (PSC) between the City of Los Angeles (City) and the 11 Pre-Qualified On-Call (PQOC) Environmental Documentation Consultants and the 10 PQOC Environmental Specialty Studies Consultants. The consultants will provide as-needed services for various public works projects.

The 11 PQOC Environmental Documentation Consultants are:

- AECOM Technical Services, Inc.
- CDM Smith, Inc.
- Dudek
- Environmental Science Associates
- ICF Jones & Stokes, Inc.
- LSA Associates, Inc.
- Parsons Transportation Group, Inc.
- PSOMAS
- Rincon Consultants, Inc.
- SWCA Environmental Consultants
- Wood Environment & Infrastructure Solutions, Inc.

The 10 PQOC Environmental Specialty Studies Consultants are:

- AECOM Technical Services, Inc.
- Aspen Environmental Group
- Dudek
- Environmental Science Associates
- GPA Consulting
- Historic Resources Group, LLC
- LSA Associates, Inc.
- Rincon Consultants, Inc.
- Stantec Consulting Services, Inc.
- SWCA Environmental Consultants

2. NOTIFY the Bureau of Engineering (BOE), Environmental Management Group, Mr. Norman Mundy, Environmental Supervisor II, at norman.mundy@lacity.org when the PSCs are ready to be executed by the Board. Five original copies of each of the contracts will be delivered to the Executive Officer of the Board for signature.
3. Upon execution, REQUEST the City Clerk to attest and certify the five original copies of the PSCs. The City Clerk and the Board will each retain one original copy and three original copies are to be returned to the BOE, Norman Mundy.
4. REQUEST that the Board randomly select the names of the PQOC consultants to create the initial PQOC Environmental Documentation Consultants List and the initial PQOC Environmental Specialty Studies Consultants List for use in future assignments of work.

FISCAL IMPACT STATEMENT

Because the proposed contracts are for as-needed services, the contracts do not have any financial impact on the City. The BOE will ensure that adequate funds are available to cover the costs for work on a specific task order prior to requesting proposals from the firms.

TRANSMITTALS

1. Copy of the BOE and Bureau of Contract Administration (BCA) Joint Report No. 1, adopted on September 13, 2019, authorizing advertisement of the Request for Qualifications (RFQ).
2. Copy of the RFQ entitled "Request for Qualifications (RFQ) Pre-Qualified On-Call Environmental Documentation and Environmental Specialty Studies Consultants Lists".
3. List of firms responding to the RFQ (to provide environmental documentation consultant services and environmental specialty studies consultant services).
4. Copy of the Statement of Qualifications (SOQ) as submitted by each firm selected for the PQOC Environmental Documentation Consultants List and the Environmental Specialty Studies Consultants List.
5. Master copy of the proposed personal services contract between the City and the selected environmental documentation firms.
6. Master copy of the proposed personal services contract between the City and the selected environmental specialty studies firms.
7. Copy of the Master RFQ/Request for Proposal Contract Checklist, Items 11-14 completed.
8. Copy of the Personal Services Contracting Process Checklist, Items 7-9 completed.

September 24, 2021
Page 3

DISCUSSION

Background

On September 13, 2019, the Board authorized the City Engineer to advertise and issue a RFQ to provide environmental documentation services and environmental specialty studies services, on a pre-qualified, as needed, basis (Transmittal No. 1). The Board also authorized the City Engineer to negotiate a PSC with each of the selected consultant firms.

A Notice to Advertise the RFQ was placed in newspapers, marketing outlets, architectural and engineering associations, and on websites. The RFQ and its attachments were uploaded to the Los Angeles Business Assistance Virtual Network (LABAVN) website, where respondents were able to download the RFQ and attachments (Transmittal No. 2).

The RFQ was downloaded from the LABVN website by 295 firms. On October 29, 2019, 22 consultants submitted their SOQ for environmental documentation services and 14 consultants submitted their SOQ for environmental specialty studies services (Transmittal Nos. 3 and 4). The SOQs were rated by a panel from the BOE based on the following criteria:

SOQ Evaluation Criteria

- **Technical Qualifications and Past Experience** **30%**
This includes the firm's background, experience, and familiarity with environmental issues for public works projects and tasks, and the qualifications of personnel.
- **Approach to Work** **30%**
This includes project management and coordination methodologies, and approaches to analyses and studies.
- **Cost Control** **30%**
This includes cost control procedures, preliminary cost estimates, personnel utilization, and fee schedules.
- **Record of Past Performance** **10%**
This includes quality of work, completion of work on time and within budget, the response of references, and a commitment to diversity.

Short lists of the most qualified Environmental Documentation Consultants and the most qualified Environmental Specialty Studies Consultants were developed. Staff briefed the Board Commissioners before contract negotiations began. BOE staff completed contract negotiations on August 24, 2021, and proposed contracts were drafted (Transmittal Nos. 5 and 6).

The current PQOC Lists of Environmental Documentation Consultants and Environmental Specialty Studies Consultants will expire on September 29, 2021. Due to the number of current projects as well as the anticipated number of future projects that will require environmental documentation and environmental specialty studies, it is requested that the subject PSCs be approved expeditiously in order for the BOE, along with the assistance of consultants, to provide environmental documentation and specialty services, as needed, for the delivery of current and future public works projects.

Local Business Preference (LBP) Program

Ordinance No. 181910 adopted the LBP Program which is designed to increase employment and expenditures in the local private sector. Proposers that qualify as a Local Business Enterprise (LBE) were granted an additional 8 percent preference to their score at the time the RFQ responses were evaluated. The preference allowed by the ordinance for the utilization of LBE subconsultants was not applicable to the RFQ evaluation process because actual subconsultant utilization cannot be pledged until after the contract has been executed and task orders are assigned for specific work.

Compliance with City and Board Policies

The Board's personal services contracting policies have been followed (Transmittal Nos. 7 and 8). The selected consultants are subject to compliance with the following City of Los Angeles' Ordinances and policies: Business Tax Registration Certificate; Non-Discrimination, Equal Employment Practices, and Affirmative Action; Insurance requirements; Equal Benefits Ordinance; Child Support Obligations Ordinance; Americans with Disabilities Act; Worker Retention Ordinance; Living Wage Ordinance; Slavery Disclosure Ordinance; Disclosure of Border Wall Contracting Ordinance; Non-Collusion; Municipal Lobbying Ordinance; First Source Hiring Ordinance; Contractors' Use of Criminal History for Consideration of Employment Applications Ordinance; and Best Terms. The PQOC consultants will comply with the requirements of the Business Inclusion Program (BIP) Subconsultant Outreach Program. Failure to comply with all requirements will render the consultant's contract subject to termination pursuant to the conditions expressed therein.

Businesses are encouraged to locate or remain within the City of Los Angeles to preserve and enhance the economic base and well-being of the City. According to the Los Angeles Residence Information form, consultants provided the following information:

Department of Public Works
Bureau of Engineering
Bureau of Contract Administration
Joint Report No. 1

September 24, 2021
Page 5

Consultant Firm	MBE/ WBE/ SBE/ EBE/ DVBE/ LGBTBE/ OBE/ LBE	Gender/ Ethnicity	Total No. of Employees in Firm	No. of Employees who are L.A. Residents	(%) of Employees who are L.A. Residents
AECOM Technical Services, Inc.	OBE/LBE		36,309	313	0.9%
Aspen Environmental Group	OBE/LBE		71	2	2.8%
CDM Smith, Inc.	OBE		4,593	15	0.3%
Dudek	OBE		601	6	1.0%
Environmental Science Associates	OBE/LBE		518	17	3.3%
GPA Consulting	WBE/SBE/ LBE	F/C	45	7	15.6%
Historic Resources Group, LLC	WBE/SBE/ EBE/LBE	F/C	12	3	25.0%
ICF Jones & Stokes, Inc.	OBE		665	10	1.5%
LSA Associates, Inc.	OBE		222	0	0.0%
Parsons Transportation Group, Inc.	OBE/LBE		2,850	28	1.0%
PSOMAS	OBE/LBE		592	41	6.9%
Rincon Consultants, Inc.	OBE		282	31	11.0%
Stantec Consulting Services, Inc.	OBE/LBE		22,000	42	0.2%
SWCA Environmental Consultants	OBE/LBE		1,147	19	1.7%
Wood Environment & Infrastructure Solutions, Inc.	OBE/LBE		3,679	9	0.2%

Note: For Gender/ Ethnicity column, F= Female, C= Caucasian.

Contractor Performance Evaluation

The quality of work performed by the consultants will be monitored in accordance with the Contractor Performance Evaluation Ordinance No. 173018 (Division 10, Chapter 1, Article 13 of the Los Angeles Administrative Code [LAAC]) and the Rules for the

Evaluation of Service Contractors, which require departments to prepare performance evaluations upon completion of all service contracts over \$25,000 and at least three months in duration. The appropriate City personnel responsible for the quality control of these PSCs shall submit Contractor Performance Evaluation Reports to the BCA upon completion of the contracts. The critiques are kept on file by the BCA for reference by other City departments and agencies.

Contractor Responsibility Ordinance

All consultants participating in this program are subject to compliance with the requirements specified in the City of Los Angeles' Contractor Responsibility Ordinance No. 173677 (Article 14, Chapter 1, Division 10, L.A.A.C.). Failure to comply with all requirements specified in the Ordinance may render the consultant's contract subject to termination pursuant to the conditions expressed therein.

Notice of Intent to Contract and Charter Section 1022 Determination

The required Notification of Intent to Contract form was submitted to the Office of the City Administrative Officer (CAO) on January 3, 2019.

On January 16, 2019, it was determined by the Personnel Department that there were no City classifications capable of doing the work. A Charter 1022 Determination from the CAO was not necessary.

City Attorney Review

All PQOC Environmental Document Services Consultants and Environmental Specialty Studies Services Consultants signed a personal services contract by August 31, 2021. The proposed contracts have been reviewed and approved as-to-form by the City Attorney's Office.

Business Inclusion Program (BIP)

On January 12, 2011, the Mayor issued Executive Directive No. 14 which created the BIP. This program provides Minority Business Enterprises (MBE), Women Business Enterprises (WBE), Small Business Enterprises (SBE), Emerging Business Enterprises (EBE), Disabled Veteran Business Enterprises (DVBE), and Other Business Enterprises (OBE) an equal opportunity to compete for and participate in City contracts. Additionally, the BIP requires respondents to perform and document a BIP outreach via the internet utilizing the LABAVN.

This RFQ was advertised with anticipated participation levels of 18 percent MBE, 4 percent WBE, 25 percent SBE, 8 percent EBE, and 3 percent DVBE. Based on a review by the Office of Contract Compliance (OCC), all 15 of the selected consultants have met the BIP outreach requirements and have been deemed responsive pending compliance with all other City requirements.

The following tables reflect the list of potential subconsultants which may be utilized on project task orders by the PQOC Environmental Documentation Services Consultants and the Environmental Specialty Studies Services Consultants. Subconsultants marked with an asterisk ("*") are certified LBEs.

Department of Public Works
Bureau of Engineering
Bureau of Contract Administration
Joint Report No. 1

September 24, 2021

Page 7

The OCC has verified the subconsultants' certifications as of August 26, 2020, the date of review of this RFQ. The awarding authority who is issuing the individual task orders will be responsible for verifying the certification status as of the date the task order is assigned.

Gender/Ethnicity Codes:

AA = African American	HA = Hispanic American
APA = Asian Pacific American	SAA = Subcontinent Asian American
NA = Native American	C = Caucasian
M = Male	F = Female

AECOM Technical Services, Inc. (OBE, LBE)		
Subconsultants	Gender/ Ethnicity	MBE/WBE/ SBE/EBE/ DVBE/LGBTBE/OBE
Aurora Industrial Hygiene	F/C	WBE/SBE/EBE/ DVBE
Blackhawk Environmental		SBE/EBE/DVBE
Galvin Preservation Associates Inc, dba GPA Consulting*	F/C	WBE/SBE
Gibson Transportation Consulting, Inc.		SBE/EBE
Historic Resources Group*	F/C	WBE/SBE/EBE
Katherine Padilla & Associates (KPA)	F/HA	MBE/WBE
KOA Corporation		OBE
Leatherman BioConsulting, Inc.	F/C	WBE/SBE/EBE
Paleo Solutions	F/C	WBE/SBE/EBE
Terry A. Hayes Associates, Inc.*	M/AA	MBE/SBE/EBE
Veneklasen Associates*		OBE
Yorke Engineering, LLC	F/C	WBE/SBE

Aspen Environmental Group (OBE, LBE)		
Subconsultants	Gender/ Ethnicity	MBE/WBE/ SBE/EBE/ DVBE/LGBTBE/OBE
Arellano Associates, LLC	F/HA	MBE/WBE/SBE/EBE
Chattel, Inc.*		SBE/EBE
Hernandez, Kroone & Associates	F/C	WBE/SBE/EBE
KOA Corporation		SBE
Ninyo & Moore Geotechnical & Environmental Science Consultants	M/HA	MBE
Paleo Solutions	F/C	WBE/SBE/EBE
Terry A. Hayes Associates, Inc.	M/AA	MBE/SBE/EBE

CDM Smith, Inc. (OBE)		
Subconsultants	Gender/ Ethnicity	MBE/WBE/SBE/EBE/ DVBE/LGBTBE/OBE
A/E Tech		SBE/EBE
A1 Marketing/Rambo House*	M/AA	MBE
ArchaeoPaleo Resource Management, Inc.	F/C	WBE/SBE/EBE
Atlas Project Support, LLC	M/HA	MBE
Barbara A. Lloyd dba Impacts USA	F/C	WBE/SBE/EBE
Bargas Environmental Consulting	F/HA	MBE/WBE/SBE/ EBE
Brenda A. Palmer Consulting	F/C	WBE/SBE/EBE
Castle Environmental Consulting, ILC		SBE/EBE
Chambers Group, Inc.	F/APA	MBE/WBE/SBE
Chattel, Inc.*		SBE/EBE
Converse Consultants*	M/APA	MBE
CWE	M/SAA	MBE/SBE
CyberCopy*		SBE
D R Consultants & Designers, Inc.	F/HA	MBE/WBE/SBE/EBE
Entech Consulting Group	F/AA	MBE/WBE
EnviCraft, LLC		SBE/EBE
General Technologies and Solutions (GTS)		SBE/EBE
Giroux & Associates		OBE
Glenn Lukos Associates		OBE
Greenwood and Associates		OBE
Guida Surveying, Inc.	F/C	WBE
HANA Resources, Inc.	F/C	WBE
Historic Resources Group	F/C	WBE/SBE/EBE
House 47	F/C	WBE/SBE/EBE
iLanco Environmental, LLC	F/C	WBE/SBE/EBE
Iteris, Inc.		OBE
KOA Corporation		SBE
MBC Aquatic Sciences		SBE/EBE
Merkel & Associates, Inc	F/C	WBE/SBE/EBE
Murakawa Communications	F/APA	MBE/WBE/SBE/EBE
Ninyo & Moore	M/HA	MBE
PacRim Engineering, Inc.*	M/APA	MBE
Paleo Solutions	F/C	WBE/SBE/EBE
Project Partners, Inc.	M/APA	MBE/SBE
Provenience Group, Inc.	F/C	WBE/SBE/EBE
Sapphos Environmental, Inc.*	F/HA	MBE/WBE/SBE/EBE
Spectrum Geophysics		SBE/EBE
The Morcos Group*	F/C	WBE/SBE/EBE
Tovar Geospatial Services (TovarGEO)	M/HA	MBE/SBE/EBE
UltraSystems Environmental	F/C	WBE/SBE/EBE
Wagner Engineering & Survey, Inc.*	F/C	WBE/SBE/EBE
Watearth, Inc.	F/C	WBE/SBE/EBE/LGBTBE

Department of Public Works
Bureau of Engineering
Bureau of Contract Administration
Joint Report No. 1

September 24, 2021

Page 9

Dudek (OBE)		
Subconsultants	Gender/ Ethnicity	MBE/WBE/SBE/EBE/ DVBE/LGBTBE/OBE
A1 Marketing/Rambo House*	M/AA	MBE
ArchaeoPaleo Resource Management, Inc.	F/C	WBE/SBE/EBE
Arellano Associates	F/HA	MBE/WBE/SBE/EBE
Atlas Project Support, LLC	M/HA	MBE
Bargas Environmental Consulting	F/HA	MBE/WBE/SBE/EBE
Brenda A. Palmer Consulting	F/C	WBE/SBE/EBE
Canete Medina Consulting Group, Inc.	F/APA	MBE/WBE
Chambers Group, Inc.	F/APA	MBE/WBE/SBE
Chattel, Inc.*		SBE/EBE
Chee Salette	F/APA	MBE/WBE/SBE/EBE
Consensus, Inc.*	F/C	WBE
Cornerstone Studios	M/APA	MBE/SBE/EBE
CWE	M/SAA	MBE/SBE
CyberCopy*		SBE
D R Consultants & Designers, Inc.	F/HA	MBE/WBE/SBE/EBE
Entech Consulting Group	F/AA	MBE/WBE
EnviCraft, LLC		SBE/EBE
Gabrieleno Tongva Indians of California		OBE
General Technologies and Solutions (GTS)		SBE/EBE
GPA Consulting*	F/C	WBE/SBE
Greenwood and Associates		OBE
Guida Surveying, Inc.	F/C	WBE
Historic Resources Group	F/C	WBE/SBE/EBE
House 47	F/C	WBE/SBE/EBE
Jenna Snow		SBE/EBE
Land IQ	F/C	WBE/SBE/EBE
Lynn C. Kronzek & Associates	F/C	WBE/SBE/EBE
MBC Aquatic Sciences		SBE/EBE
Project Partners, Inc.	M/APA	MBE/SBE
Raju Associates, Inc.		SBE/EBE
Robertson Planning, LLC*	F/APA	MBE/WBE
Sapphos Environmental, Inc.*	F/HA	MBE/WBE/SBE/EBE
Statistical Research, Inc.		OBE
Terry A. Hayes Associates, Inc.	M/AA	MBE/SBE/EBE
The Morcos Group*	F/C	WBE/SBE/EBE
The Sierra Group*	F/HA	MBE/WBE
Tovar Geospatial Services (TovarGEO)	M/HA	MBE/SBE/EBE
Wagner Engineering & Survey, Inc.*	F/C	WBE/SBE/EBE
Watearth, Inc.	F/C	WBE/SBE/EBE/LGBTBE
Wildscape Restoration	F/APA	MBE/WBE/SBE/EBE
Yorke Engineering, LLC	F/C	WBE/SBE

Environmental Science Associates (OBE, LBE)		
Subconsultants	Gender/ Ethnicity	MBE/WBE/SBE/EBE/ DVBE/LGBTBE/OBE
ASM Affiliates, Inc.		OBE
Advanced Geoscience, Inc.		SBE/EBE
Agency 39A, LLC		SBE/EBE
Ana Cubas Consulting, LLC dba Mariposa Community Outreach & Public Affairs	F/HA	MBE/WBE/SBE/EBE
Bargas Environmental Consulting, LLC	F/HA	MBE/WBE/SBE/EBE
Canete Medina Consulting Group, Inc.	F/APA	MBE/WBE
Chattel, Inc.*		SBE/EBE
Cornerstone Studios, Inc.	M/APA	MBE/SBE/EBE
Environmental Vision	F/C	WBE/SBE/EBE
Fehr & Peers		OBE
GCAP Services, Inc.	M/HA	MBE/SBE/EBE
General Technologies and Solutions, LLC (GTS)		SBE/EBE
Gibson Transportation Consulting, Inc.		SBE/EBE
Katherine Padilla & Associates (KPA)	F/HA	MBE/WBE
Kee Solutions, Inc.		SBE/EBE/DVBE
KOA Corporation		OBE
Lynn C. Kronzek & Associates*	F/C	WBE/SBE/EBE
Melvyn Green & Associates, Inc.		OBE
Ninyo & Moore Geotechnical & Environmental Science Consultants	M/HA	MBE
Page & Turnbull, Inc.		OBE
Paleo Solutions, Inc.	F/C	WBE/SBE/EBE
Pax Environmental, Inc.		SBE/EBE/DVBE
PNACRM		OBE
Positive Image Photographic Services		OBE
Provenience Group, Inc.	F/C	WBE/SBE/EBE
Robert Dorame		OBE
Spectra Company		OBE
The Altum Group		SBE/EBE
The Morcos Group*	F/C	WBE/SBE/EBE
The Robert Group	F/AA	MBE/WBE/SBE/EBE
Urbana Preservation & Planning, LLC	F/C	WBE/SBE/EBE
Visionscape Imagery, Inc.		OBE
Watearth, Inc.	F/C	WBE/SBE/EBE/ LGBTBE
Wildscape Restoration, Inc.	F/APA	MBE/WBE/SBE/EBE

Department of Public Works
Bureau of Engineering
Bureau of Contract Administration
Joint Report No. 1

September 24, 2021
Page 11

GPA Consulting (WBE, SBE, LBE)		
Subconsultants	Gender/ Ethnicity	MBE/WBE/ SBE/EBE/ DVBE/LGBTBE/OBE
Atlas Project Support, LLC	M/HA	MBE
Bargas Environmental Consulting, LLC	F/HA	MBE/WBE/SBE/EBE
Canete Medina Consulting Group Inc.	F/APA	MBE/WBE
Casamar Group, LLC*	M/HA	MBE/SBE/EBE/DVBE
Chee Salette Architecture Office dba Tina Chee Salette	F/APA	MBE/WBE/SBE/EBE
Cornerstone Studios, Inc.	M/APA	MBE/SBE/EBE
California Watershed Engineering (CWE)	M/SAA	MBE/SBE
D R Consultants & Designers*	F/HA	MBE/WBE/SBE/EBE
Entech Northwest Inc. dba Entech Consulting Group	F/AA	MBE/WBE
Fehr & Peers		OBE
General Technologies and Solutions, LLC (GTS)		SBE/EBE
Greenwood and Associates		OBE
House 47, LLC	F/C	WBE/SBE/EBE
Jenna Snow		SBE/EBE
KPFF Consulting Engineers		OBE
Lynn C. Kronzek & Associates*	F/C	WBE/SBE/EBE
MA Engineering*	M/HA	MBE/DVBE/SBE/EBE
Ana Cubas Consulting, LLC dba Mariposa Community Outreach & Public Affairs	F/HA	MBE/WBE/SBE/EBE
Michael Baker International, Inc.		OBE
PacRim Engineering, Inc.*	M/APA	MBE
Paleo Solutions	F/C	WBE/SBE/EBE
Petra Products Inc. dba Petra Resource Management		SBE/EBE/DVBE
Provenience Group	F/C	WBE/SBE/EBE
A1 Marketing dba Rambo House Media LLC*	M/AA	MBE
UltraSystems Environmental, Inc.	F/C	WBE/SBE/EBE

Historic Resources Group, LLC (WBE, SBE, EBE, LBE)		
Subconsultants	Gender/ Ethnicity	MBE/WBE/ SBE/EBE/ DVBE/LGBTBE/OBE
Greenwood and Associates		SBE
Paleo Solutions	F/C	WBE/SBE/EBE

ICF Jones & Stokes, Inc. (OBE)		
Subconsultants	Gender/ Ethnicity	MBE/WBE/ SBE/EBE/ DVBE/LGBTBE/OBE
Advanced Geoscience, Inc.		SBE/EBE
Arellano Associates	F/HA	MBE/WBE/SBE/EBE
Blackhawk Environmental		SBE/EBE/DVBE
Chambers Group, Inc.	F/APA	MBE/WBE/SBE
Chen Ryan Associates, Inc.	F/APA	MBE/WBE/SBE/EBE
Cogstone Resource Management, Inc.	F/C	WBE/SBE/EBE
Consensus, Inc.*	F/C	WBE
Converse Consultants*	M/APA	MBE
Cross-Spectrum Acoustics	M/AA	MBE
CWE	M/SAA	MBE/SBE
D R Consultants & Designers, Inc.	F/HA	MBE/WBE/SBE/EBE
Document All Stars	F/C	WBE
Fehr & Peers		OBE
Geosyntec Consultants		OBE
GlobalASR Consulting	M/APA	MBE/SBE/EBE
Greenwood and Associates		SBE
HDR Engineering		OBE
House 47	F/C	WBE/SBE/EBE
iLanco Environmental, LLC	F/C	WBE/SBE/EBE
Impact Sciences	F/C	WBE/SBE/EBE
Infrastructure Engineering Corp.		OBE
JTL Consultants	F/C	WBE
MBC Aquatic Sciences		SBE/EBE
MBI Strategic Communications		OBE
Ninyo & Moore	M/HA	MBE
Paleo Solutions	F/C	WBE/SBE/EBE
PanGIS, Inc.	F/C	WBE/SBE/EBE
Project Partners, Inc.	M/APA	MBE/SBE
Provenience Group, Inc.	F/C	WBE/SBE/EBE
Stillwater Sciences	F/C	WBE
Terry A. Hayes Associates, Inc.	M/AA	MBE/SBE/EBE
The Altum Group		SBE/EBE
The Morcos Group*	F/C	WBE/SBE/EBE
Tovar Geospatial Services (TovarGEO)	M/HA	MBE/SBE/EBE
Urbana Preservation & Planning, LLC	F/C	WBE/SBE/EBE
Wagner Engineering & Survey, Inc.*	F/C	WBE/SBE/EBE
Yorke Engineering, LLC	F/C	WBE/SBE
Yunsoo Kim Design, Inc. (YKD)	M/APA	MBE/SBE/EBE

Department of Public Works
Bureau of Engineering
Bureau of Contract Administration
Joint Report No. 1

September 24, 2021
Page 13

LSA Associates, Inc. (OBE)		
Subconsultants	Gender/ Ethnicity	MBE/WBE/ SBE/EBE/ DVBE/LGBTBE/OBE
A1 Marketing dba Rambo House Media, LLC*	M/AA	MBE
ArchaeoPaleo Resource Management, Inc.	F/C	WBE/SBE/EBE
Bargas Environmental Consulting, LLC	F/HA	MBE/WBE/SBE/EBE
Brenda A. Palmer Consulting*	F/C	WBE/SBE/EBE
California Watershed Engineering (CWE)	M/SAA	MBE/SBE
Chambers Group, Inc.	F/APA	MBE/WBE/SBE
Chattel, Inc.*		SBE/EBE
Chee Salette Architecture Office dba Tina Chee Landscape Studio	F/APA	MBE/WBE/SBE/EBE
Cornerstone Studios, Inc.	M/APA	MBE/SBE/EBE
Document All Stars	F/C	WBE
Entech Northwest, Inc. dba Entech Consulting Group	F/AA	MBE/WBE
Fusco Engineering, Inc.		OBE
General Technologies and Solutions, LLC (GTS)		SBE/EBE
Greenwood and Associates		OBE
Guida Surveying, Inc.	F/C	WBE
Hana Resources, Inc.	F/C	WBE
House 47, LLC	F/C	WBE/SBE/EBE
Jenna Snow		SBE/EBE
McCormick-Busse, Inc. dba MBI Media*	F/C	WBE/SBE/EBE
PacRim Engineering, Inc.*	M/APA	MBE
Paleo Solutions, Inc.	F/C	WBE/SBE/EBE
PanGIS, Inc.	F/C	WBE/SBE/EBE
RJM Design Group, Inc.		SBE/EBE
Stiegler Architechs, P.C. dba IS Architecture	F/C	WBE/SBE/EBE
The Morcos Group*	F/C	WBE/SBE/EBE
Tovar Geospatial Services (TovarGEO)*	M/HA	MBE/SBE/EBE
Ultrasonics Environmental, Inc.	F/C	WBE/SBE/EBE
Veneklasen Associates*		OBE
Watearth, Inc.	F/C	WBE/SBE/EBE/LGBTBE
Wildscape Restoration, Inc.	F/APA	MBE/WBE/SBE/EBE
Yunsoo Kim Design, Inc. (YKD)*	M/APA	MBE/SBE/EBE

Parsons Transportation Group, Inc. (OBE, LBE)		
Subconsultants	Gender/ Ethnicity	MBE/WBE/ SBE/EBE/ DVBE/LGBTBE/OBE
ArchaeoPaleo Resource Management, Inc.	F/C	WBE/SBE/EBE
ASM Affiliates, Inc.		OBE
John P. Castleberry dba Castle Environmental Consulting, LLC		SBE/EBE
The Converse Professional Group dba Converse Consultants*	M/APA	MBE
D R Consultants & Designers, Inc.*	F/HA	MBE/WBE/SBE/EBE
FPL and Associates, Inc.	M/APA	MBE/SBE/EBE
The Imagen Group	F/HA	MBE/WBE/SBE/EBE
Katherine Padilla & Associates (KPA)	F/HA	MBE/WBE
Kana Subsurface Engineering (KSE)	M/HA	MBE/DVBE
MBC Aquatic Sciences		SBE/EBE
Ninyo & Moore Geotechnical & Environmental Science Consultants	M/HA	MBE
Paleo Solutions, Inc.	F/C	WBE/SBE/EBE
Panacea, Inc.	M/APA	MBE/SBE/EBE
Sapphos Environmental, Inc.*	F/HA	MBE/WBE/SBE/EBE
Terry A. Hayes Associates, Inc.*	M/AA	MBE/SBE/EBE
Watearth, Inc.	F/C	WBE/SBE/EBE/LGBTBE
Wiltec	M/AA	MBE
WRECO	M/APA	MBE

PSOMAS (OBE, LBE)		
Subconsultants	Gender/ Ethnicity	MBE/WBE/ SBE/EBE/ DVBE/LGBTBE/OBE
A1 Marketing dba Rambo House Media, LLC*	M/AA	MBE
Atlas Project Support, LLC	M/HA	MBE
Barbara A. Lloyd dba Impacts USA Advisory Services	F/C	WBE/SBE/EBE
Bargas Environmental Consulting, LLC	F/HA	MBE/WBE/SBE/EBE
Brenda A. Palmer Consulting*	F/C	WBE/SBE/EBE
C Young Associates		SBE/EBE
California Watershed Engineering (CWE)	M/SAA	MBE/SBE
Canete Medina Consulting Group, Inc.	F/APA	MBE/WBE
Chambers Group, Inc.	F/APA	MBE/WBE/SBE
Chattel, Inc.*		SBE/EBE
Chee Salette Architecture Office dba Tina Chee Landscape Studio	F/APA	MBE/WBE/SBE/EBE
City Design Studio, LLC	M/SAA	MBE
Civil Engineering Survey Group, Inc. dba CES Group, Inc.		SBE/EBE

Department of Public Works
Bureau of Engineering
Bureau of Contract Administration
Joint Report No. 1

September 24, 2021

Page 15

Consensus, Inc.*	F/C	WBE
Cornerstone Studios, Inc.	M/APA	MBE/SBE/EBE
CyberCopy, Inc.*		SBE
D R Consultants & Designers, Inc.*	F/HA	MBE/WBE/SBE/EBE
Entech Northwest, Inc. dba Entech Consulting Group	F/AA	MBE/WBE
Envicraft, LLC		SBE/EBE
GDML Holdings, Inc. dba Dakeluna Consultants	M/HA	MBE/SBE/EBE
General Technologies & Solutions, LLC (GTS)		SBE/EBE
Greenwood and Associates		OBE
Gruen Associates*	M/APA	MBE
Hana Resources, Inc.	F/C	WBE
Historic Resources Group*	F/C	WBE/SBE/EBE
House 47, LLC	F/C	WBE/SBE/EBE
iLanco Environmental, LLC	F/C	WBE/SBE/EBE
Impact Sciences*	F/C	WBE/SBE/EBE
Jenna Snow		SBE/EBE
Land IQ, LLC	F/C	WBE/SBE/EBE
Lynn C. Kronzek & Associates*	F/C	WBE/SBE/EBE
MBC Aquatic Sciences		SBE/EBE
McCormick-Busse, Inc. dba MBI Media*	F/C	WBE/SBE/EBE
Ninyo & Moore Geotechnical & Environmental Science Consultants	M/HA	MBE
PacRim Engineering, Inc.*	M/APA	MBE
PanGIS, Inc.	F/C	WBE/SBE/EBE
Petra Products, Inc. dba Petra Resources Management		SBE/EBE/DVBE
Project Partners, Inc.	M/APA	MBE
Provenience Group, Inc.	F/C	WBE/SBE/EBE
The Altum Group		SBE/EBE
The Morcos Group*	F/C	WBE/SBE/EBE
Tovar Geospatial Services (TovarGEO)*	M/HA	MBE/SBE/EBE
Translutions, Inc.	M/SAA	MBE/SBE/EBE
Ultrasytems Environmental, Inc.	F/C	WBE/SBE/EBE
Universal Reprographics, Inc.*	F/C	WBE/SBE/EBE
Urbana Preservation & Planning, LLC	F/C	WBE/SBE/EBE
Watearth, Inc.	F/C	WBE/SBE/EBE/ LGBTBE
Wildscape Restoration, Inc.	F/APA	MBE/WBE/SBE/EBE

Rincon Consultants, Inc. (OBE)		
Subconsultants	Gender/ Ethnicity	MBE/WBE/ SBE/EBE/ DVBE/LGBTBE/OBE
Advanced Geoscience, Inc.		SBE/EBE
ArchaeoPaleo Resource Management, Inc.	F/C	WBE/SBE/EBE
Arellano Associates, LLC	F/HA	MBE/WBE/SBE/EBE
Bargas Environmental Consulting, LLC	F/HA	MBE/WBE/SBE/EBE
Barrios & Associates, LLC dba Communications Lab	F/HA	MBE/WBE/SBE/EBE
Brenda A. Palmer Consulting*	F/C	WBE/SBE/EBE
California Watershed Engineering (CWE)	M/SAA	MBE/SBE
Chambers Group, Inc.	F/APA	MBE/WBE/SBE
Chattel, Inc.*		SBE/EBE
Chee Salette Architecture Office dba Tina Chee Landscape Studio	F/APA	MBE/WBE/SBE/EBE
Circlepoint		OBE
Cornerstone Studios, Inc.	M/APA	MBE/SBE/EBE
EMAX Laboratories, Inc.		OBE
Entech Northwest, Inc. dba Entech Consulting Group	F/AA	MBE/WBE
Fehr and Peers		OBE
Greenwood and Associates		OBE
Historic Resources Group*	F/C	WBE/SBE/EBE
Katherine Padilla & Associates (KPA)	F/HA	MBE/WBE
Kee Solutions, Inc.		SBE/EBE/DVBE
KOA Corporation*		OBE
Lynn C. Kronzek & Associates*	F/C	WBE/SBE/EBE
The Morcos Group*	F/C	WBE/SBE/EBE
PaleoWest Archaeology		OBE
PanGIS, Inc.	F/C	WBE/SBE/EBE
Petra Products, Inc. dba Petra Resource Management		SBE/EBE/DVBE
Provenience Group, Inc.	F/C	WBE/SBE/EBE
Ruth Villalobos & Associates, Inc.	F/C	WBE
Sapphos Environmental, Inc.*	F/HA	MBE/WBE/SBE/EBE
Tovar Geospatial Services (TovarGEO)*	M/HA	MBE/SBE/EBE
Ultrasonics Environmental, Inc.	F/C	WBE/SBE/EBE
Visionscape Imagery, Inc.		OBE
Wagner Engineering & Survey, Inc.*	F/C	WBE/SBE/EBE
Watearth, Inc.	F/C	WBE/SBE/EBE LGBTBE

Department of Public Works
Bureau of Engineering
Bureau of Contract Administration
Joint Report No. 1

September 24, 2021
Page 17

Stantec Consulting Services, Inc. (OBE, LBE)		
Subconsultants	Gender/ Ethnicity	MBE/WBE/SBE/EBE/ DVBE/LGBTBE/OBE
Acentech, Inc.		OBE
ArchaeoPaleo Resource Management, Inc.	F/C	WBE/SBE/EBE
Brenda A. Palmer Consulting*	F/C	WBE/SBE/EBE
Chambers Group, Inc.	F/APA	MBE/WBE/SBE
Chattel, Inc.*		SBE/EBE
Consensus, Inc.*	F/C	WBE
The Converse Professional Group dba Converse Consultants*	M/APA	MBE
Cornerstone Studios, Inc.	M/APA	MBE/SBE/EBE
California Watershed Engineering (CWE)	M/SAA	MBE/SBE
D R Consultants & Designers, Inc.*	F/HA	MBE/WBE/SBE/EBE
EW Consulting, Inc.	F/C	WBE/SBE/EBE
Fehr and Peers		OBE
Galvin Preservation Associates, Inc. dba GPA Consulting*	F/C	WBE/SBE
Greenwood and Associates		OBE
House 47, LLC	F/C	WBE/SBE/EBE
Barbara A Lloyd dba Impacts USA Advisory Services	F/C	WBE/SBE/EBE
Stiegler Architects P.C. dba IS Architecture	F/C	WBE/SBE/EBE
JMDiaz, Inc. (JMD)*	M/HA	MBE/SBE/EBE
Kee Solutions, Inc.		SBE/EBE/DVBE
Leatherman Bioconsulting, Inc.	F/C	WBE/SBE/EBE
MBC Aquatic Sciences		SBE/EBE
Michael Baker International, Inc.		OBE
Paleo Solutions, Inc.	F/C	WBE/SBE/EBE
PanGIS, Inc.	F/C	WBE/SBE/EBE
Petra Products, Inc. dba Petra Resource Management		SBE/EBE/DVBE
Provenience Group, Inc.	F/C	WBE/SBE/EBE
Sapphos Environmental, Inc.*	F/HA	MBE/WBE/SBE/EBE
Tenera Environmental		SBE/EBE
Terry A. Hayes Associates, Inc.*	M/AA	MBE/SBE/EBE
The Morcos Group*	F/C	WBE/SBE/EBE
UltraSystems Environmental, Inc.	F/C	WBE/SBE/EBE
Wagner Engineering & Survey, Inc.*	F/C	WBE/SBE/EBE
Wildscape Restoration	F/APA	MBE/WBE/SBE/EBE
Yorke Engineering, LLC	F/C	WBE/SBE

SWCA Environmental Consultants (OBE, LBE)		
Subconsultants	Gender/ Ethnicity	MBE/WBE/ SBE/EBE/ DVBE/LGBTBE/OBE
Ambient Air Quality & Noise Consulting		OBE
Arellano Associates, LLC	F/HA	MBE/WBE/SBE/EBE
Bargas Environmental Consulting, LLC	F/HA	MBE/WBE/SBE/EBE
Canete Medina Consulting Group, Inc.	F/APA	MBE/WBE
Chambers Group, Inc.	F/APA	MBE/WBE/SBE
Chattel, Inc.*		SBE/EBE
Chaudhary & Associates	M/SAA	MBE
The Converse Professional Group dba Converse Consultants*	M/APA	MBE
Transportation Planning Group, Inc. dba Crain & Associates		SBE/EBE
California Watershed Engineering (CWE)	M/SAA	MBE/SBE
D R Consultants & Designers, Inc.*	F/HA	MBE/WBE/SBE/EBE
EFI Global, Inc.		OBE
Entech Northwest, Inc. dba Entech Consulting Group	F/AA	MBE/WBE
EW Consulting, Inc.	F/C	WBE/SBE/EBE
Fehr & Peers		OBE
Gabrieleno Tongva Tribal Consultants		OBE
GEOinovo Solutions, Inc.	F/HA	MBE/WBE/SBE/EBE
Geosyntec Consultants		OBE
Gibson Transportation Consulting, Inc.		SBE/EBE
Greenwood and Associates		OBE
Hana Resources Inc.	F/C	WBE
House 47, LLC	F/C	WBE/SBE/EBE
Impact Sciences*	F/C	WBE/SBE/EBE
Kee Solutions, LLC		SBE/EBE/DVBE
Kittlelson & Associates, Inc.		OBE
Kleinfelder, Inc.		OBE
McCormick-Busse, Inc. dba MBI Media*	F/C	WBE/SBE/EBE
Miller Marine Science & Consulting, Inc.		SBE/EBE
Mundo Environmental	M/HA	MBE
Ninyo & Moore Geotechnical & Environmental Science Consultants	M/HA	MBE
PacRim Engineering, Inc.*	M/APA	MBE
Paleo Solutions	F/C	WBE/SBE/EBE
PanGIS, Inc.	F/C	WBE/SBE/EBE
Provenience Group	F/C	WBE/SBE/EBE
Sapphos Environmental, Inc.*	F/HA	MBE/WBE/SBE/EBE
Raju Associates*		SBE/EBE
The Imagen Group	F/HA	MBE/WBE/SBE/EBE
The Morcos Group*	F/C	WBE/SBE/EBE
Chee Salette Architecture Office, Inc. dba Tina Chee Landscape Studio	F/APA	MBE/WBE/SBE/EBE

Department of Public Works
Bureau of Engineering
Bureau of Contract Administration
Joint Report No. 1

September 24, 2021

Page 19

Tovar Geospatial Services (TovarGEO)*	M/HA	MBE/SBE/EBE
Urbana Preservation & Planning	F/C	WBE/SBE/EBE
Urban Strategy Group, Inc.*	M/HA	MBE/SBE/EBE
Watearth	F/C	WBE/SBE/EBE/ LGBTBE
Wildscape Restoration, Inc.	F/APA	MBE/WBE/SBE/EBE
Yorke Engineering, LLC	F/C	WBE/SBE

Wood Environment & Infrastructure Solutions (OBE, LBE)		
Subconsultants	Gender/ Ethnicity	MBE/WBE/SBE/EBE/ DVBE/LGBTBE/OBE
ArchaeoPaleo Resource Management, Inc.	F/C	WBE/SBE/EBE
ASM Affiliates		OBE
Bargas Environmental Consulting, LLC	F/HA	MBE/WBE/SBE/EBE
Canete Medina Consulting Group	F/APA	MBE/WBE
Casamar Group, LLC*	M/HA	MBE/SBE/EBE/DVBE
Chambers Group, Inc.	F/APA	MBE/WBE/SBE
Chattel, Inc.*		SBE/EBE
Consensus, Inc.*	F/C	WBE
The Converse Professional Group dba Converse Consultants*	M/APA	MBE
California Watershed Engineering (CWE)	M/SAA	MBE/SBE
Diego & Son Printing, Inc.	M/HA	MBE/SBE/EBE/DVBE
Deirdre Stiles Graphic Design		OBE
Entech Northwest, Inc. Entech Consulting Group	F/AA	MBE/WBE
Fehr & Peers		OBE
General Technologies and Solutions, LLC (GTS)		SBE/EBE
Greenwood & Associates		OBE
iLanco Environmental, LLC	F/C	WBE/SBE/EBE
Katz & Associates	F/C	WBE/SBE
Ninyo & Moore Geotechnical & Environmental Science Consultants	M/HA	MBE
PacRim Engineering, Inc.*	M/APA	MBE
PanGIS, Inc.	F/C	WBE/SBE/EBE
Terry A. Hayes & Associates*	M/AA	MBE/SBE/EBE
Urbana Preservation & Planning, LLC	F/C	WBE/SBE/EBE
VIZfx		OBE
Wagner Engineering*	F/C	WBE/SBE/EBE
Watearth, Inc.	F/C	WBE/SBE/EBE LGBTBE

(MEM GV RMK JF)

Report reviewed by:

BOE (ADM and PAC)

Report prepared by:

Environmental Management Group

Maria Martin

Group Manager

Phone No.: (213) 485-5753

Compliance review performed
and approved by:



Lynda McGlinchey

Program Manager II

Office of Contract Compliance

Bureau of Contract Administration

MM/NM/08-2021-0131.EMG.gva

Questions regarding this
report may be referred to:

Norman Mundy, Environmental Supervisor II

Phone No. (213) 485-5737

E-mail: norman.mundy@lacity.org

Respectfully submitted,



For

Gary Lee Moore, PE, ENV SP

City Engineer

Bureau of Engineering



John L. Reamer, Jr.

Inspector of Public Works

Bureau of Contract Administration

The 11 PQOC Environmental Documentation Consultants are:

- AECOM Technical Services, Inc.
- CDM Smith, Inc.
- Dudek
- Environmental Science Associates
- ICF Jones & Stokes, Inc.
- LSA Associates, Inc.
- Parsons Transportation Group, Inc.
- PSOMAS
- Rincon Consultants, Inc.
- SWCA Environmental Consultants
- Wood Environment & Infrastructure Solutions, Inc.

DRAWING RESULTS

- 1 ICF Jones & Stokes, Inc.
- 2 PSOMAS
- 3 CDM Smith, Inc.
- 4 Dudek
- 5 Wood Environment & Infrastructure Solutions, Inc.
- 6 LSA Associates, Inc.
- 7 Parsons Transportation Group, Inc
- 8 SWCA Environmental Consultants
- 9 Rincon Consultants, Inc
- 10 AECOM Technical Services, Inc
- 11 Environmental Science Associates

The 10 PQOC Environmental Specialty Studies Consultants are:

- AECOM Technical Services, Inc.
- Aspen Environmental Group
- Dudek
- Environmental Science Associates
- GPA Consulting
- Historic Resources Group, LLC
- LSA Associates, Inc.
- Rincon Consultants, Inc.
- Stantec Consulting Services, Inc.
- SWCA Environmental Consultants

DRAWING RESULTS

- 1 Aspen Environmental Group**
- 2 LSA Associates, Inc**
- 3 Stantec Consultanting Services, Inc.**
- 4 Environmental Science Associates**
- 5 AECOM Technical Services, Inc.**
- 6 GPA Consulting**
- 7 Rincon Consultants, Inc.**
- 8 Historic Resources Group, LLC**
- 9 SWCA Environmental Consultants**
- 10 Dudek**

**BOARD OF PUBLIC WORKS
MEMBERS****AURA GARCIA**
PRESIDENT**M. TERESA VILLEGAS**
VICE PRESIDENT**DR. MICHAEL R. DAVIS**
PRESIDENT PRO TEMPORE**VAHID KHORSAND**
COMMISSIONER**SUSANA REYES**
COMMISSIONER**DR. FERNANDO CAMPOS**
EXECUTIVE OFFICER**CITY OF LOS ANGELES**

CALIFORNIA

**KAREN BASS**
MAYOR**DEPARTMENT OF
PUBLIC WORKS****BUREAU OF
ENGINEERING****TED ALLEN, PE**
CITY ENGINEER1149 S. BROADWAY, SUITE 700
LOS ANGELES, CA 90015-2213<http://eng.lacity.org>

March 6, 2023

**TASK ORDER SOLICITATION (TOS) ED21-033 FOR ENVIRONMENTAL
MONITORING FOR ASILOMAR BL STABILIZATION CONTSTRUCTION**

Distribution: All Firms on the Approved Pre-Qualified On-Call (PQOC) Environmental Documentation Consultant Services List

Task Order Title: Environmental Monitoring for Asilomar BI Stabilization Construction

Task Order Solicitation No.: ED21-033

Project Title: Asilomar Boulevard Stabilization (M799)

Work Order: E1907673

Proposal Due Date: March 14, 2023

1. Proposed Project**A. Location**

The Asilomar Boulevard Stabilization project (Project) site location is Asilomar Boulevard between Almar Avenue and Wynola Street, Pacific Palisades, City of Los Angeles, Los Angeles County, CA 90272. The Project site is on top of a coastal bluff landward of Pacific Coast Highway and approximately ¼-mile from Will Rogers State Beach, in the Brentwood - Pacific Palisades Community Plan Area of the City of Los Angeles (City). See Figure 1: Project Vicinity.

B. Description

The Bureau of Engineering (Engineering) is proposing to install 346 4.5-ft.- diameter, 90-ft.-deep columns and grade soils (22,000 cu. yds. of cut and 1,000 cu. yds. of fill) within a 7,881 sq. ft. section of the City's right-of-way using the Cement Deep Soil Mixing (CDSM) technique to stabilize Asilomar Boulevard and the coastal bluff between Almar Avenue and Wynola Street (see Figure 2: Project Location). The Asilomar Boulevard Landslide is an active landslide located on the south-facing slope below the subject site.

TRANSMITTAL NO. 2

The bluff site, and the road, park, and residences that it supports, are in danger of serious damage or destruction due to increasing landslide movement, bluff erosion, and flooding.

The CDSM technique involves drilling columns into the earth by mixing the soil with a cement slurry in-place. It is an alternative to the use of soil nail walls, soldier pile and tieback systems, or other deep pilings for geologic stabilization that, in this case, avoids direct modifications to the bluff slope, reduces soil import and export volumes as compared to the other alternatives, and does not impact visual resources. The Project is within the public right-of-way of Asilomar Boulevard in the dual permit jurisdiction area of the coastal zone in the City.

Project construction impacts are anticipated to be mostly temporary (i.e., the closure of the street to the public, use of a crane, cement silos, dump trucks, an excavator, and pickup trucks, and construction-related noise); the more permanent development is the installation of the mixed soil and cement columns, which would be below grade. There would be no work in the habitat area on the face of the bluff. However, sensitive native plant species, including coastal sage scrub and lemonade berry scrub, exist within close proximity to the Project site, and may support nesting birds.

The environmental research and consultation conducted in support of a Project Environmental Impact Report (EIR) and Coastal Development Permit (CDP) indicate the Project site and vicinity are considered an important tribal cultural landscape. Per special conditions for the issuance of the Project State CDP, a Tribal Cultural Resource Treatment and Mitigation Plan shall be followed and implemented during project construction.

2. Scope of Work

Comply with Project CDP conditions. Selected consultant will conduct pre-construction training, biological surveys, archaeological/paleontological/tribal cultural resources monitoring, and reporting. Consultation with the California Department of Fish and Wildlife, the California Coastal Commission, the Native American Heritage Commission, and several tribal entities may be required.

Task 1. Biological Monitoring Plan

- A. Review applicable biological resources reports, and related documentation, prepared in support of the Project EIR and CDP.
- B. Prepare, edit or expand, if applicable a written Biological Monitoring and Protection Plan per requirements of the California Coastal Commission and/or Project State CDP or related documents. The Biological Monitoring Plan shall ensure the following:
 1. Pre-construction surveys conducted within (7) days before the start of work to determine the presence of any sensitive wildlife species with the potential to occur near the project site.
 2. At minimum, monitoring shall occur once a week during any week in which the project occurs. Daily monitoring shall occur during development which could

- significantly impact biological resources such as excavation, grading, or other ground disturbing activity with the potential to perturb any sensitive species identified. Based on field observations, the biologist shall advise Engineering regarding methods to minimize or avoid significant impacts that could occur upon nearby sensitive species or habitat areas.
3. No borings are permitted that would result in damage or degradation of environmentally sensitive habitat area (ESHA) in nearby Asilomar View Park or similarly sensitive habitat areas. Under no circumstances are the bore sites or other ground disturbance permitted on the bluff face.
 4. If drilling and/or construction-related activities are to occur between January 1 and September 30, a preliminary nesting bird survey shall be conducted to determine the presence of active nests within 500 feet of the drilling and/or construction-related activities. The nesting bird surveys shall be completed no more than 72 hours prior to any drilling and/or construction-related activities. All ground disturbance activities within 500 feet of raptor nests or 300 feet of other active bird nests or as otherwise specified shall be halted until the nesting effort is complete.
 5. Appropriate noise-abatement measures (e.g., sound walls) shall be implemented to ensure that noise levels are less than 60 A-weighted decibels (dBA) at the active nest of a listed species, as determined by the biological monitor. This shall be verified by weekly noise monitoring at an equivalent location conducted by a qualified Acoustical Engineer during the breeding season (January 1 to September 30) or as otherwise determined by a qualified biological monitor based on nesting activity. If sound mitigation measures do not reduce noise levels to 60 dB at the nest site(s), construction shall cease and shall not recommence until new sound mitigation can be employed.

Task 2. Biological Resources Awareness Training

- A. Conduct a pre-construction biological resources awareness training, including but not limited to, the Engineering Project Manager and Project construction contractor at the project site to discuss the potential for the discovery of biological resources.
- B. Prepare appropriate handouts or other materials in advance of the training.
- C. Record, if appropriate, the training such that the training recording can be made available to applicable new Project construction personnel.

Task 3. Biological Surveys, Monitoring, and Reporting

- A. Conduct nesting bird surveys in accordance with the Biological Monitoring Plan.
- B. Monitor compliance with the requirements of the Project CDP and Biological Monitoring Plan.
- C. Coordinate with applicable resource agencies.
- D. Prepare written reports in accordance with the Biological Monitoring Plan and Project CDP conditions.

Task 4. Cultural/Tribal Resources Documentation Review and Project Treatment and Mitigation Plan

- Review cultural resources reports, and related documentation, prepared in support of the Project EIR and CDP.
- Prepare, edit or expand, if applicable, a Project Tribal Cultural Resource Treatment and Mitigation Plan prepared per requirements of the California Coastal Commission and/or Project State CDP.

Task 5. Cultural/Tribal Resources Awareness Training

- Conduct at least one pre-grading (pre-construction) cultural and tribal resources awareness training, including but not limited to, the Engineering Project Manager and Project construction contractor at the project site to discuss the potential for the discovery of archeological/paleontological/tribal cultural resources.
- Prepare appropriate handouts or other materials in advance of the training.
- Record, if appropriate, the training such that the training recording can be made available to applicable new Project construction personnel.

Task 6. Archaeological/Paleontological/Tribal Resources Monitoring

- Conduct monitoring of all project grading and any other subsurface activity that has potential to uncover or otherwise disturb cultural deposits. Such monitoring shall be performed by qualified monitor(s) meeting California Office of Historic Preservation (OHP) standards and a minimum of one Native American monitor from each tribal entity with documented ancestral ties to the area appointed consistent with the standards of the Native American Heritage Commission (NAHC).
 - Provide a copy of all archaeological documents and reports to the Native American monitors prior to grading operations.
 - Native American monitors shall be allowed to spot check drilled soils in the field and monitor sifted soils in the field and in the laboratory, when feasible. Laboratory results of sifted soils shall be shared with all affected Native American Tribes.
- If any archaeological or paleontological, or cultural deposits, are discovered, including but not limited to skeletal remains and grave-related artifacts, artifacts of traditional cultural, religious or spiritual sites, or any other artifacts relating to the use or habitation sites, all drilling and subsurface construction activities that have the potential to uncover or otherwise disturb tribal cultural deposits in the area of the discovery shall cease within at least 50 feet of the deposit immediately, with the final avoidance buffer distance determined in consultation with the affected Native American Tribe(s).
 - Treatment of the discovery shall be determined by the appropriate monitor(s) or the most likely descendent (MLD). Significance testing and data recovery may be carried out only if acceptable to the affected Native American Tribe(s), in accordance with the attached "Cultural Resources Significance Testing Plan Procedures" (Attachment 1).
 - The consultant shall report all discoveries to Engineering as soon as possible, by phone and/or by email, which will be determined by Engineering during the kick-off meeting for this task order. Engineering

is required to report all discovered resources as soon as possible, to the Coastal Commission Executive Director.

- Prepare written monitoring and resource evaluation reports for submittal to Engineering, the Coastal Commission, and the South Central Coastal Information Center, as applicable.

The consultant shall assume that it will be necessary to make two (2) round of submittals of drafts of the report to the BOE and the Coastal Commission for review and comment. Please provide one (1) copy in digital format (MS Word format preferred). Provide digital copies of the final report in electronic format, preferably PDF format.

A. Project Management

For costs associated with Project Management:

- Assume one (1) kick-off meeting
- Submit weekly progress updates via email
- As needed, attend up to five (5) coordination meetings with City staff. The construction contractor, California Coastal Commission, California Fish and Wildlife, Native American Tribal representatives, and other applicable agency representatives may also be in attendance.

3. Solicitation Proposal Requirements

All work as described above shall be coordinated through:

Eileen Schoetzow, Environmental Supervisor
Environmental Management Group
1149 S. Broadway, Suite 600, Mail Stop 939
Los Angeles, California 90015-2213
eileen.schoetzow@lacity.org

Proposals shall include the following:

- A. Project Understanding.** Firm's overall approach to the Project. This includes the proposed management and coordination methodologies, and approaches to analyses and studies.
- B. Related Experience.** Describe similar projects recently completed by your firm.
- C. Project Team.**
 - Provide the project team organization and describe the background, roles, and responsibilities of team members, including resumes. This includes the relevance of the project team's background, experience, and familiarity to the solicited task.
 - For subconsultants, in addition to the information above, provide information on Minority Business Enterprise (MBE), Women Business Enterprise (WBE), Small Business Enterprise (SBE),

Emerging Business Enterprise (EBE), Disabled Veteran Business Enterprise (DVBE), and Other Business Enterprise (OBE) involvement if utilized. See Section 7 below for Business Inclusion Program Anticipated Participation Levels (APLs).

- D. Detailed Scope of Services and Schedule.** Itemize the base task and contingency task. Detail any subtask as appropriate.
- E. Cost Breakdown.** The cost estimate shall detail the proposed tasks based on the Compensation Method, see Section 8 below. A detailed cost breakdown includes the proposed staff, billing rates, subconsultant cost breakdown, direct costs, and anticipated hours shall be provided

All proposals for this TOS must be submitted no later than 4:00 p.m. on March 14, 2023. Late submittals of any sort will not be accepted. Proposals may be emailed to Eileen Schoetzow. Please submit the digital copy in PDF format.

Proposals shall be prepared in accordance with the terms and conditions of the current Environmental Documentation Consultant Services Contract between the City and your firm. The technical proposal must address all requirements of the scope of work and must include cost breakdown and a schedule of completion.

A scanned copy of the Non-Collusion Affidavit form (attached) must be signed and returned with all proposals.

4. Solicitation Schedule

The following is a tentative schedule:

Issue Task Order Solicitation	March 6, 2023
Deadline for Consultant(s) to Submit Questions	March 9, 2023
Deadline for Proposal Submittal	March 14, 2023
Selection and Negotiations	March 15, 2023
Issue Task Order Notice to Proceed	One day to week from Negotiation

5. Selection Criteria

Proposals will be evaluated using the following criteria:

- A. Technical Qualifications and Past Experience - 30%.** This includes the firm's background, experience, and familiarity with environmental issues for public works projects and tasks, and the qualifications of personnel.
- B. Approach to Work - 30%.** This includes project management and coordination methodologies, and approaches to analyses and studies.
- C. Cost Control - 30%.** This includes cost control procedures, preliminary cost estimates, personnel utilization, and fee schedules.
- D. Record of Past Performance - 10%.** This includes quality of work, completion of work on time and within budget, the response of references, and a commitment to diversity.

6. Selection Process and Disclaimer

This TOS is distributed to all the firms on the City's PQOC Environmental Documentation Consultant Services List. All proposals received will be reviewed and a firm will be selected based on the selection criteria identified above.

The City reserves the right to interview all proposers or to award solely based upon the written proposal. The City reserves the right to negotiate the technical scope, schedule, and cost breakdown of any proposal submitted. No fee or payment shall be made for costs associated with the preparation of proposals under this TOS. All proposals become the property of the City.

The City also reserves the right to select one (1) or multiple consultant teams, as well as the right to reject proposals. Issuance of this Task Order is not an assurance that any work whatsoever shall commence under this Project. For additional information, please contact Eileen Schoetzow at eileen.schoetzow@lacity.org.

When the Task Order is awarded, the selected firm will be notified through a written Notice to Proceed (NTP). As needed to expedite the process, a written notice may be preceded verbally, via email, or via fax. Firms not selected will be notified via email.

7. Business Inclusion Program Anticipated Participation Levels

Pursuant to Article 17 of the Contract, your firm has agreed and obligated itself to utilize the services of MBE/WBE/SBE/EBE/DVBE/OBE firms. The City has set APLs of 18% MBE, 4% WBE, 25% SBE, 8% EBE, and 3% DVBE. Firms are encouraged, to the extent possible, to maintain these percentages throughout the invoices for each of the task orders.

Due to the specialized nature of this task, the Business Inclusion Program APL targets have been waived. However, Consultants are encouraged to utilize subconsultants whenever subconsulting opportunities arise.

8. Compensation Method

Compensation for services provided shall be on a Cost Reimbursement - Hourly Billing Rate basis as specified in Article 10 of the Contract. Task Order invoices shall be submitted to EMG Project Manager Eileen Schoetzow, with cc to Lauren Rhodes (lauren.rhodes@lacity.org), Maria Martin (Maria.Martin@lacity.org), and Jacque Salazar (Jacquelyn.Salazar@lacity.org).

9. Insurance Requirements

Insurance policies must be current and on file with the Office of the City Administrative Officer (CAO) Risk Management when the Task Order is awarded to the selected Consultant. Work cannot commence or continue, and invoices will not be paid, if the proper proof of insurance form(s) is not on file with the CAO.

MM/mm

TOS ED21-033_03-06-23

Attachments

1. *Cultural Resources Significance Testing Plan Procedures*
2. Non-Collusion Affidavit form
3. Schedule B

Figure 1: Project Vicinity

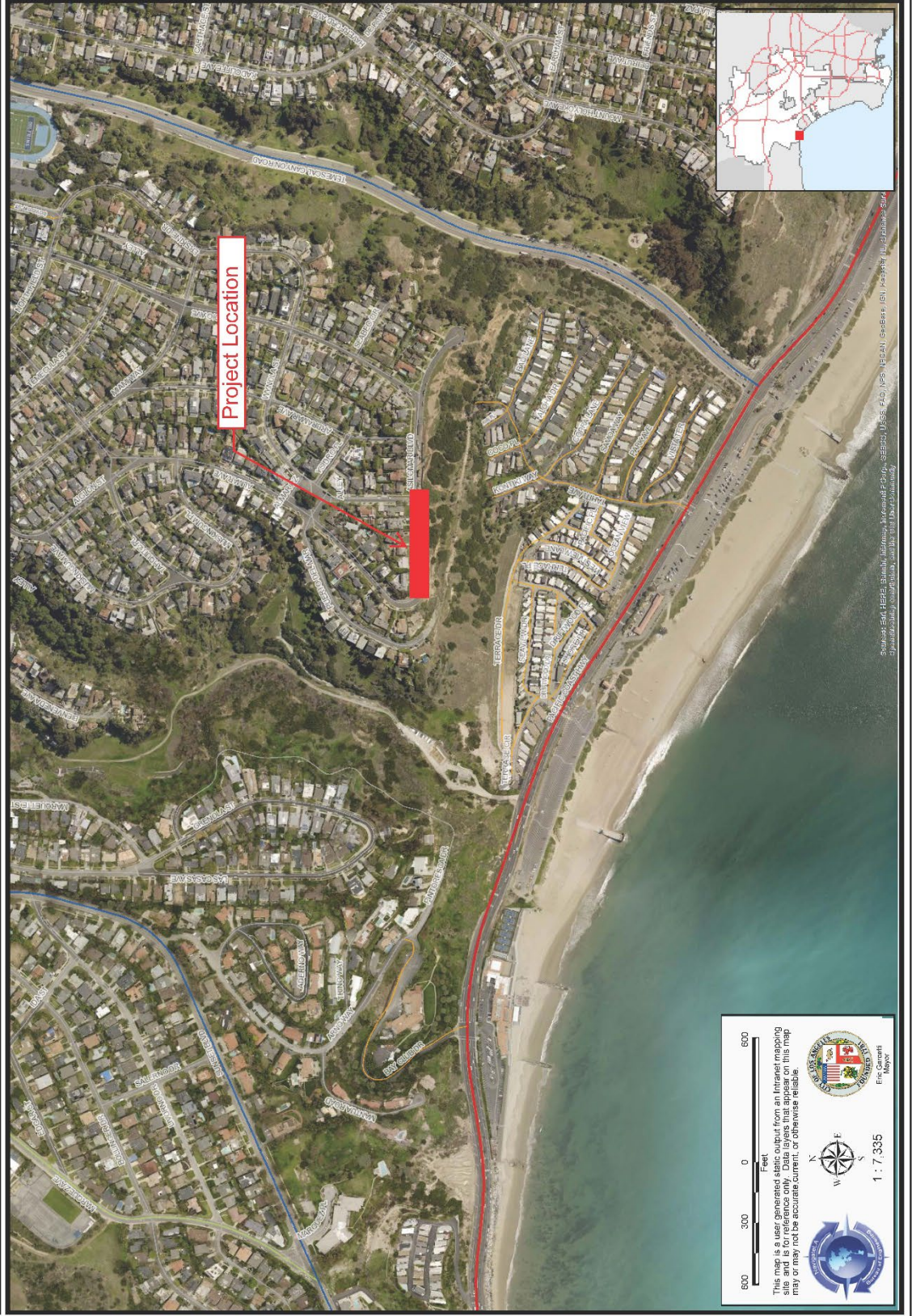


Figure 2: Project Location

This map is a user generated static output from an internal mapping site and is for references only. Data layers that appear on this map may or may not be accurate, current, or otherwise reliable.

Scale: 1 : 3,658

North Arrow

City of San Francisco Seal

Eric Garcetti Mayor





Maria Martin <maria.martin@lacity.org>

Re: Request for Emergency Authorization to Raise the Cost Ceiling for TOS ED21-033

1 message

Teresa Villegas <teresa.villegas@lacity.org>

Thu, Feb 8, 2024 at 5:23 PM

To: Maria Martin <maria.martin@lacity.org>

Cc: Ted Allen <ted.allen@lacity.org>, Jose Fuentes <Jose.Fuentes@lacity.org>, Patrick Schmidt <patrick.schmidt@lacity.org>, Emilia Der Sarkissian <emilia.dersarkissian@lacity.org>

Thank you Maria, this is fine, please proceed.

Thanks,
TeresaTeresa Villegas
Vice President
Los Angeles City Board of Public Works
213.978.0255 Office
teresa.villegas@lacity.org
www.lacity.org

On Thu, Feb 8, 2024 at 5:21 PM Maria Martin <maria.martin@lacity.org> wrote:

Hello Commissioner Villegas,

This email is to request emergency authorization to raise the cost ceiling from \$125,741.73 to \$299,800, including contingency, for the Environmental Monitoring TOS No. ED21-21-033 that was awarded to SWCA Environmental Consultant (SWCA) for the Asilomar Blvd Stabilization Project.

The Project is in the process of installing three hundred and forty-six (346) 4.5-foot-diameter by 90-foot-deep columns within a 7,881 square foot section of the City's right-of-way using Cement Deep Soil Mixing (CDSM) technique to stabilize Asilomar Blvd, between Almar Ave and Wynola St in Pacific Palisades, CD 11. Sensitive native plant species, including coastal sage scrub and lemonade berry scrub, exist within close proximity to the Project site and may support nesting birds. The site has sensitivity for cultural resources and is located within a sacred Native American area.

Construction of the Project is about 50% complete and per the requirements of the California Environmental Quality Act and the Coastal Act, biological, cultural, and tribal resources monitoring is required during the entire construction period.

On May 2, 2023, the Bureau of Engineering (BOE) hired SWCA, Contract No. C-139083, from the Pre-Qualified On-Call (PQOC) Environmental Documentation Consultant Services List to prepare Biological and Cultural Resources Monitoring Management Plans, which were conditions by California Coastal Commission prior to their issuance of the Project's Coastal Development Permit (CDP). BOE issued an NTP for a not-to-exceed amount of \$125,741.73, to develop the required plans and start monitoring activities upon start of construction. The BOE did not know the actual extent of the required hours of monitoring or the number of Native American monitors that would be required until after the Coastal Commission issued the CDP on June 29, 2023.

With this emergency authorization, the total cost ceiling for the task will be \$299,800 which includes approximately \$43,000 in contingency. The emergency authorization is needed due to the actual number of hours of monitoring and reporting needed, the number of tribal cultural monitors required after consultation with the Coastal Commission, as well as for overtime work that had not been previously anticipated.

TRANSMITTAL NO. 3

Upon approval of this emergency authorization, we will issue a Notice to Proceed to the environmental monitoring and return to the Board for approval of the Board Report within 30 days. Please let me know if you concur.

Thank you for your immediate attention to this matter. I am available to answer any questions you may have.

Best regards,

Maria Martin

Environmental Management Group | Environmental Affairs Officer

Bureau of Engineering | Department of Public Works

[1149 S. Broadway, Suite 600](#)

[Los Angeles, CA 90015](#)

Mail Stop 939

O: [213 485 5753](#)

maria.martin@lacity.org



BAVN Upload Request Form

Subconsultant Waiver Request Form

Date of Request: 3/6/2023

Division: Environmental Management Group

Task Order Title: Environmental Monitoring for Asilomar Stabilization Construction

TOS No. ED21-033

Subconsultant Waiver Justification:

The Environmental Management Group (EMG) is requesting a waiver from the Business Inclusion Program for this Task Order Solicitation (TOS) ED21-033. The TOS consist of the construction monitoring program for biological monitoring, including nesting bird surveys; archaeological, paleontological, and Native American resources monitoring; tribal government and other agency consultation; and written monitoring reports. Because of the highly specialized nature of the task and need for qualified staff, it will be completely performed by the prime consultant. The total anticipated cost for the task is \$145,000 and the task is anticipated to end by March 2024. Due to the type of specialized work and the total contract value, there is no opportunity to hire subcontractors for this project.

For PAC only:

Sub Waiver Approved? ☒ Yes ☐ No

Date Sub Waiver Approved: 3/7/2023