

Department of Public Works

Bureau of Engineering
Report No. 1

November 18, 2022
CD No. 6

ISSUE THE TASK FOR SOLICITATION NO. 54 TO GEOSYNTEC CONSULTANTS FROM THE PRE-QUALIFIED ON-CALL CONSULTANTS LIST TO PROVIDE COMPREHENSIVE MASTER PLANNING AND DESIGN CONSULTING SERVICES FOR THE SEPULVEDA BASIN VISION PLAN PROJECT (WORK ORDER NO. E1908913, CONTRACT NO. C-129657)

RECOMMENDING THE BOARD OF PUBLIC WORKS (BOARD):

AUTHORIZE the City Engineer to issue the task to Geosyntec Consultants (Geosyntec), Contract No. C-129657, from the Pre-Qualified On-Call (PQOC) Wastewater and Environmental Engineering Services Consultants List to provide comprehensive master planning and design consulting services for the Sepulveda Basin Vision Plan Project (Vision Plan), as stated in Task Order Solicitation (TOS) No. 54, with a budget authority of \$2,339,654, which includes contingency.

TRANSMITTALS

1. Copy of TOS No. 54, entitled "The Sepulveda Basin Vision Plan Project Feasibility/Conceptual Study", dated February 9, 2022.
2. Copy of Grant Agreement from the Santa Monica Mountains Conservancy (SMMC) of the State of California, between the SMMC and the Bureau of Engineering (BOE) (Agreement 3810-GF-1284), dated March 10, 2022.

DISCUSSION

Background

On June 26, 2017, the Board approved the PQOC list of consultants to provide wastewater and environmental engineering services for various Public Works projects. The contract with Geosyntec was executed on July 11, 2017 and has been amended for five additional years through July 11, 2027.

The proposed Vision Plan is to cover the Sepulveda Basin (Basin), which is an approximately 2,000-acre flood control facility owned and managed by the U.S. Army Corps of Engineers (Corps). The Basin is first and foremost a flood risk management facility owned and managed by the Corps to fulfill this critical function. A concrete flood control dam sits at the eastern end of the Basin. The Corps has leased large areas to the City of Los Angeles (City) and other public and private entities for recreation and other uses. The recreation uses are largely managed by the City's Department of Recreation and Parks (RAP). The Donald C. Tillman Water Reclamation Plant is in the Basin and is operated and managed by the LA Sanitation and Environment. The Los Angeles River (LA River)

Recreation Zone for river kayaking and fishing is managed by the Mountains Recreation and Conservation Authority (MRCA).

At over 2,000 acres, the Basin is one of the largest open spaces in the San Fernando Valley. The Basin is an important hub for passive and active outdoor recreation, containing many important community facilities including the Anthony C. Beilenson Park with Lake Balboa, the Sepulveda Basin Sports Complex, the Japanese Garden, multiple golf courses, a model aircraft field, an archery range, kayaking and fishing areas, and other community spaces. The Basin also contains critical habitat for plants and wildlife, and a soft-bottomed section of the LA River.

Los Angeles is one of the most park poor large cities in the United States according to the Trust for Public Land. The Basin is directly adjacent to several communities defined as being in high, or in very high need for open space in the Los Angeles County Parks Needs Assessment. Currently, large areas of the Basin remain undeveloped, underutilized and are challenging to access. There are approximately 325 acres of land classified as inactive and/or future recreation in the Sepulveda Dam Basin Master Plan and the Environmental Assessment published by the Corps in 2011. These underutilized spaces within the Basin have at times seen negative activity including several large wildfires.

Under the guidance of the Corps, these underutilized spaces can be turned into amenities with new recreational uses that could include trails and other public facilities. These new amenities would further bolster the Basin's appeal as a regional park, with accessibility from two adjacent Orange Line Stations. The Basin has been and is currently the focus of several other important planning and design initiatives such as the potential use of a part of the Basin for the 2028 Olympics.

Additionally, the Basin is bisected by one of the two segments of the LA River which have a soft bottom, and this provides an opportunity for a more naturalized River restoration effort. This segment of the LA River has been recognized in various prior planning efforts as ideal for restoration, and these include the LA River Revitalization Master Plan (City, 2007) and the SMMC Upper LA River and Tributaries Revitalization Plan (2022).

The project's goal is to establish a world class Vision Plan resulting in a long-term strategic plan for the future of the Basin that builds on the Corps' 2011 Environmental Assessment and on other design efforts. This Vision Plan will propose designs that can be implemented in phases to improve the visitor experience, maximize opportunities for recreation, improve access throughout the Basin, improve the habitat areas and ecosystem functions, restore natural function to the LA River and its tributaries, and improve the flood control function of the Basin.

The Vision Plan will include the development of up to 12 selected public projects. These projects are intended to increase access to the 2028 Olympic events, respond to community input and needs, and focus on River restoration efforts, improving flood risk management and natural River functions. The proposed changes in the Basin are

November 18, 2022
Page 3

intended to improve connectivity to the surrounding communities and increase movement within the Basin, which will facilitate the use of the Basin for the 2028 Olympics.

TOS Description

TOS No. 54 sought to engage a qualified team capable of providing the full range of disciplines and professional consulting services for a comprehensive Vision Plan for the Basin (Transmittal No. 1).

The scope of work of the Vision Plan includes identifying and defining in greater detail 12 new public projects that the City has conceptually defined. Three of these projects have had greater definition and are currently in various stages of design. The three projects are listed as follows: 1) Balboa Aquatic Center - construct new aquatic facility; 2) Hjelte Soccer Field - construct new athletic fields, lighting, and parking; and 3) LA River Way: San Fernando Valley Completion Project (Balboa to Burbank) - construct a bike path along the river in the Basin from Balboa to Burbank.

For the other nine projects, the focus will be on aligning the projects to increasing access to the upcoming 2028 Olympic events, responding to community input on long term community needs, and improving the flood risk management and natural River function.

The Vision Plan shall:

- 1) Audit existing land uses, landscape features, habitat values, patterns of use, and user groups within the Basin and identify areas that can be enhanced.
- 2) Provide a framework for how future investments, such as the 2028 Olympic facilities and River restoration, can tie into the overall vision for the Basin.
- 3) Provide a framework for improving mobility, access and wayfinding around and within the Basin for cars, pedestrians, and cyclists.
- 4) Outline a decision-making framework between the different government agencies with purview over the Basin, including the Corps, the County of Los Angeles, and the City.
- 5) Increase recreational opportunities for long term use while preserving and enhancing wildlife and habitat areas.
- 6) Through a River-focused planning process, integrate improved riverine habitats, improved recreational River access, improved River adjacent public safety and connectivity, and restore natural ecosystem functionality to the River and the tributaries within the Basin.

- 7) Maintain or improve on current flood risk capacity in the Basin.

The environmental clearances of the projects in the final Vision Plan will be a standalone task, and the sequence of the clearances will be part of the Vision Plan Phasing. Collectively, the Phasing Plan will incorporate the full buildout of the project, anticipated to be approximately 25 years.

Summary of Selection and Negotiations

On February 9, 2022, the BOE distributed TOS No. 54 to all 24 consultants on the PQOC Wastewater and Environmental Engineering Services Consultants List. The following four firms submitted proposal responses on March 25, 2022: Geosyntec; McMillen Jacobs Associates, Inc.; Atkins North America, Inc.; and CH2M Hill Engineers, Inc. (subsidiary of Jacobs).

After a thorough evaluation of the proposals, all four firms were invited to interview between April 25, 2022 and April 28, 2022. The interview panel consisted of three BOE staff, one staff person from the RAP, and one staff person from the MRCA.

Geosyntec was selected based on an evaluation of the team's qualifications, experience and availability of the personnel to deliver the project. An amount of \$1,949,654, which includes \$50,000 of reimbursable expenses, was agreed to with Geosyntec. Documentation supporting the selection of Geosyntec, as well as a record of the negotiations has been included in the project file.

Business Inclusion Program (BIP)

This task will be subject to the BIP outreach requirements. The City has set anticipated participation levels of 18 percent minority-owned (MBE), 4 percent women-owned (WBE), 25 percent small (SBE), 8 percent emerging (EBE), and 3 percent disabled veteran-owned (DVBE) business enterprises. For this task, the consultant is pledging a MBE participation level of 22.02 percent, a WBE participation level of 26.33 percent, a SBE participation level of 25.37 percent, an EBE participation level of 15.91 percent, and a DVBE participation level of 4.55 percent.

With the BOE's approval, Geosyntec added the following seven firms to the existing subconsultants list (Schedule A) to augment skills needed for the project: Psomas; Gruen Associates; the Robert Group; Pacoima Beautiful; ALTA Planning and Design; Agency Artifact; and Leland Saylor Associates. On this particular task, the following MBE, WBE, SBE, EBE, DVBE, and other business enterprises (OBE) firms are proposed to be utilized by the consultant:

Gender/Ethnicity Codes:

AA = African American
APA = Asian Pacific American
NA = Native American
M = Male

HA = Hispanic American
SAA = Subcontinent Asian American
C = Caucasian
F = Female

Department of Public Works
Bureau of Engineering
Report No. 1

November 18, 2022

Page 5

Subconsultants	Gender/ Ethnicity	MBE/WBE/ SBE/EBE/ DVBE/OBE	% of Base Task	Task Amount
OLIN Partnership, LTD	F/C	WBE	22.51%	\$ 438,940
Agency Artifact	M/HA	MBE	5.02%	\$ 97,970
ALTA Planning and Design		OBE	7.17%	\$ 139,784
Gruen Associates	M/APA	MBE/SBE	4.91%	\$ 95,640
Psomas		OBE	9.99%	\$ 194,803
Estolano Advisors	F/HA	WBE/SBE/EBE	3.82%	\$ 74,420
Leland Saylor Associates		SBE/DVBE	4.55%	\$ 88,778
The Robert Group	F/AA	MBE/SBE/ EBE	12.09%	\$ 235,750
Pacoima Beautiful		OBE	2.56%	\$ 50,000
Subtotal Subconsultant Participation			72.62%	\$1,416,085
Prime Participation including reimbursable expenses			27.38%	\$ 533,569
Initial Base Task			100.00%	\$1,949,654
Contingency				\$ 390,000
Total Task Budget Authority				\$2,339,654

The following is a summary of the subconsultant utilization pledged by the consultant by business enterprise:

Total Subconsultant Participation						
Pledged	MBE	WBE	SBE	EBE	DVBE	OBE
% of Base Task	22.02%	26.33%	25.37%	15.91%	4.55%	19.73%
\$ Amount	\$429,360	\$513,360	\$494,588	\$310,170	\$88,778	\$384,587

Contractor Performance Evaluation

In accordance with Division 10, Chapter 1, Article 13 of the Los Angeles Administrative Code, the appropriate City personnel responsible for the quality control of this personal services contract shall submit Contractor Performance Evaluation Reports to the Bureau of Contract Administration, Special Research & Investigation Section upon completion of the contract.

STATUS OF FUNDING

Total funding needed for this task is not-to-exceed \$2,339,654, which includes \$390,000 for contingency. Partial funding for this project is provided by a grant of \$950,000 from the SMMC, which is on a reimbursable basis. A Grant Agreement between the SMMC and the BOE has been signed and approved under the agreement number 3810-GF-2184 on

March 10, 2022 (Transmittal No. 2). Additional funding of \$1,000,000 is from the Capital and Technology Improvement Expenditure Program (CTIEP) approved in the Fiscal Year 2021-2022 Mayor's Adopted Budget and appropriated to the Engineering Special Services Fund. This funding source will act as a front fund for the SMMC grant. In the Mayor's Adopted Budget for Fiscal Year 2022-2023, \$2,500,000 was included in the CTIEP. Fiscal Year 2022-2023 funding of \$1,160,346 will be allocated for the future environmental clearance task, and other tasks that may be needed.

Item	Fund No.	Contract	Total
1	Fund No. 682, Department No. 50, Appropriation Unit No. 50VVHL	\$1,000,000	\$1,000,000
2	Fund No. 100, Department 54, Appropriation Unit No. 00W868	\$1,339,654	\$1,339,654
Total			\$2,339,654

The City's liability under this contract shall only be to the extent of the present City appropriation to fund the contract. However, if the City shall appropriate funds for any succeeding years, the City's liability shall be to the extent of such appropriation, subject to the terms and conditions of the contract.

(RMK SF GV DW)

Report reviewed by:

BOE (ADM and PAC)

Report prepared by:

Architectural Division

Steven Fierce, AIA
Principal Architect
Phone No. (213) 485-4795

Respectfully submitted,



Ted Allen, PE
City Engineer

Statement as to funds approved by:



Miguel De La Peña, Director
Office of Accounting
Fund Ref. 682/50/50VVHL/\$1,000,000
Date: 11/07/2022

SF/SYZ/08-2022-0104_ARC.lk

Questions regarding this
report may be referred to:
Shun Yu Zhang, Civil Engineer
Phone No. (213) 485-4478
E-mail: shun.yu.zhang@lacity.org

**BOARD OF PUBLIC WORKS
MEMBERS****Vacant**
PRESIDENT**AURA GARCIA**
VICE PRESIDENT**DR. MICHAEL R. DAVIS**
PRESIDENT PRO TEMPORE**JESSICA M. CALOZA**
COMMISSIONER**M. TERESA VILLEGAS**
COMMISSIONER**DR. FERNANDO CAMPOS**
EXECUTIVE OFFICER**CITY OF LOS ANGELES**

CALIFORNIA

**ERIC GARCETTI**
MAYOR**DEPARTMENT OF
PUBLIC WORKS
BUREAU OF
ENGINEERING****GARY LEE MOORE, PE, ENV SP**
CITY ENGINEER1149 S. BROADWAY, SUITE 700
LOS ANGELES, CA 90015-2213<http://eng.lacity.org>

February 9, 2022

To All Consultants on the Pre-Qualified On-Call Wastewater and Environmental Engineering Services Consultants List

**TASK ORDER SOLICITATION (TOS) NO. 054 FOR THE SEPULVEDA BASIN
VISION PLAN PROJECT FEASIBILITY/CONCEPTUAL STUDY - WORK ORDER NO.
E1908913**

INTRODUCTION:

The City of Los Angeles (CITY), Department of Public Works, Bureau of Engineering (BOE) is seeking proposals for comprehensive master planning and design consulting services for the development of a world class Vision Plan for the Sepulveda Basin Project (Project). BOE seeks to engage a qualified team capable of providing the full range of disciplines and professional consulting services needed. The CITY intends to contract with one entity (hereinafter referred to as "Consultant") that shall be responsible for administering the entire Project and managing a team of subconsultants. The Consultant and their team shall be able to provide the services as described below.

The total amount payable to the Consultant shall not exceed \$1,950,000 inclusive of reimbursable expenses of \$50,000, with a performance period not exceeding 22 months from the date of issuance of the Notice to Proceed (NTP) by the CITY for the final Vision Plan. Interim milestone deliverables will be established in consultation with the CITY, with the goal of a 16-month timeframe to fully develop the Draft Vision Plan.

PROJECT BACKGROUND AND DESCRIPTION:

At over 2,000 acres, the Sepulveda Basin (Basin) is the largest open space in the San Fernando Valley and the second largest in the City. The Basin is an important hub for passive and active outdoor recreation, containing many important community facilities including Lake Balboa, active recreational playing fields, walking trails, golf courses, a model airplane facility, a LA River kayaking and fishing area, and the Japanese Garden,

TRANSMITTAL NO. 1

to name a few. It also provides critical habitat for plants and wildlife, and a natural section of the Los Angeles River (River).

The Basin is first and foremost a flood risk management facility owned by the Corps of Engineers, and it is managed by the Corps to fulfill this function. A critical flood control dam sits at the eastern end of the Basin. The Corps has leased areas to the City and other public and private entities for recreation and other uses, which includes a City wastewater treatment plant named the Tillman Water Reclamation Plant. The recreational uses are largely managed by the City's Recreation and Parks Department, and the Los Angeles River Recreation Zone for river kayaking and fishing is managed by the Santa Monica Mountains Recreation and Conservation Authority (Attachment 01).

The Basin is not living up to its full potential. Los Angeles is one of the most park poor large cities in the United States according to the Trust for Public Land. The Basin is directly adjacent to two communities defined as being high, or very high need in the Los Angeles County Parks Needs Assessment. Yet large areas of Basin remain undeveloped, underutilized and challenging to access. This includes approximately 325 acres of land designated as Inactive and/or Future Recreation in the Sepulveda Dam Basin Master Plan and Environmental Assessment (EA) from the U.S. Army Corps of Engineers, dated September 2011 (Attachment 02). In addition, 250 acres of land is designated as being either Environmentally Sensitive or Vegetative Management. These underutilized spaces within the Basin have become locations for negative activity, resulting in several large fires that have broken out over the past several years. However, under the Corps' EA, these underutilized spaces can be turned into amenities with new recreational uses that includes trails and other public facilities. This would further bolster the Basin's appeal as a regional park, which would be one of the most accessible in the City, as it has two adjacent Orange Line stations.

The Basin is and has been the focus of several other important planning and design initiatives. It will serve as the Valley Sports Park for the 2028 Olympics (see LA28.org for details). In addition, it is bisected by the River in a critical location for potential river restoration as has been recognized in various prior planning efforts (LA River Revitalization Master Plan, City of Los Angeles 2007 (Attachment 03), the Santa Monica Mountains Conservancy Upper Los Angeles River and Tributaries Revitalization Plan 2020 (Attachment 04)).

The Vision Plan shall address opportunities to enlarge the footprint of the River and tributaries within the Basin to restore hydrologic function through naturalized restoration. In some locations, this could result in removal of concrete channels sidewalls where stormwater flows permit. Through river and tributary restoration, the Basin can better integrate the River to improve habitat, recreational access, public safety, connectivity, and natural function.

The Vision Plan must account for these prior efforts and integrate the ambitions of each so that they collectively enhance the Basin and leave a legacy for residents of the San

Fernando Valley and the City. Now is a critical moment to improve the Basin as the crown jewel of the San Fernando Valley through the creation of a Vision Plan.

The Vision Plan shall:

- 1) Audit existing land uses, landscape features, habitat values, patterns of use, and user groups within the Basin and identify areas that can be enhanced.
- 2) Provide a framework for how future investments, such as the 2028 Olympic facilities and River restoration, can tie into the overall vision for the Basin.
- 3) Provide a framework for improving mobility, access and wayfinding around and within the Basin for cars, pedestrians, and cyclists.
- 4) Outline a decision-making framework between the different government agencies with purview over the Basin, including the Army Corps, the County of Los Angeles, and the City.
- 5) Increase recreational opportunities for long term use while preserving and enhancing wildlife and habitat areas.
- 6) Through a river-focused planning process, integrate improved riverine habitats, improved recreational river access, improved river public safety and connectivity, and restore natural ecosystem functionality to the River and the tributaries within the Basin.
- 7) Maintain or improve on current flood risk capacity in the Basin.

The world class Vision Plan shall result in a long term design goal for the future of the Basin that builds on the values of the Corps' 2011 Sepulveda Dam Basin Master Plan and Environmental Assessment, proposes creative changes that can be implemented in phases to improve the visitor experience, maximizes opportunities for recreation, improves access throughout the Basin, improves the habitat areas and ecosystem functions, restores natural function to the River and its tributaries, and improves the flood control function of the Basin. The early implementation phases of the Vision Plan shall mark the initial transformation of the Basin into an international destination for Los Angeles during the 2028 Olympics and thereafter.

The Consultant shall work closely with the community and the many stakeholders of the Basin to develop the Vision for the Basin, and to define the innovative projects. This Vision Plan shall also build on other design efforts that have preceded this work. These reference documents are listed in the List of Attachments.

The proposed changes in the Basin to improve connectivity to the surrounding communities and improve movement within the Basin shall be designed as one of the early stand-alone phases of the Vision Plan, as these projects will facilitate the use of the Basin for the 2028 Olympics. The other changes to the Basin, including River changes and new recreational projects, are to be formulated in accordance with the EA guidelines as separate phases, with a serious consideration of which of these could also be completed by the 2028 Olympics. It is the task of the Consultant to logically map how best to achieve the long-term Vision Plan in the most rational and achievable phasing.

Collectively, the phasing plan must incorporate the full buildout of the Project. The full buildout of the Project is approximately 25 years.

The scope of work for the Vision Plan for the Basin anticipates that the Consultant shall identify and define in greater detail approximately twelve (12) new projects that the City has conceptually defined in the attached map (Attachment 05). Three (3) of these projects have already been identified. The three (3) projects are listed below and described in (Attachment 06):

- 1) Balboa Aquatic Center - Construct new aquatic facility
- 2) Hjelte Soccer Field - Construct new athletic fields, lighting, and parking
- 3) LA River Way: San Fernando Valley Completion Project (Balboa to Burbank) – Construct bike path along the River in the Basin from Balboa to Burbank

For the nine (9) other new projects, the Consultant must focus on aligning the projects to increase access to the 2028 Olympic events, to responding to community input on long term community needs, and to describing a River-focused restoration effort that will improve flood risk management and natural River function. For all twelve (12) projects, the scope of the Vision Plan includes defining the scope of each individual project, developing a project budget for each, and developing a project schedule. Also, the Consultant shall be asked to identify potential funding sources for these twelve projects, and to provide a funding schedule to realize these projects.

According to the Olympic Games Cluster Plan, the 2028 Games will take advantage of the Greater Los Angeles' unique geography and iconic locations, creating five (5) clusters all within 30 minutes of the Olympic Village. The Valley Cluster (situated within the Basin) will be the first time in history to play host to a number of venues and events. The design consultant shall coordinate with the Olympic Committee for any revision or update to the Valley Sports Park (Valley Cluster) and make it part of the Vision Plan.

The environmental clearances of the projects in the Final Vision Plan will be a standalone task, and the sequence of the clearances must be part of the Vision Plan phasing schedule.

All the twelve projects identified should be consistent with the guidelines and principles of the Corps of Engineers' EA. If the proposed projects would require an addendum or supplement to the Corps' EA, the Consultant shall identify this, in coordination with the Corps, and include this in the project budget and schedule to describe the path to the required environmental clearances for these projects. The feasibility of the placement and type of projects will be determined during the Vision Plan development process.

Development in the Basin may not impede Corp of Engineers Project Operations. The Sepulveda Dam Basin Proposed Land Use Classification Map (Attachment 02, Page 328) within the EA identifies the land use classifications the Corps has approved. Projects that are identified shall meet the use classifications identified in the EA.

Projects must also demonstrate a need, economic feasibility, and financial capability that takes into account long term maintenance.

The primary constraint on land uses within the Basin is the periodic inundation of portions of the Basin for downstream flood risk management. The frequency, extent, and duration of flood inundation must be considered in the management and appropriate use of the Basin. The Projects should work around this constraint and highlight the importance of the Basin for flood risk management. As part of this EA, the filling frequency curves have been calculated and maps have been developed that illustrate flood stage elevations for the 10-, 50-, and 100-year floods. Areas within the Basin have been identified within the EA according to topographic analysis reflecting the level of flood inundation and activities and structures that may occur within each area of the Basin.

Per the guidelines of the EA, the Vision Plan tasked to the Consultant must reflect the most current advances in restoration ecology and wildlife management in the context of the Corps' mission, regulations, and guidance. Therefore, any proposed addendums or supplements to the EA must be in alignment with the Corps mission, regulations, and guidance.

The Basin is identified by the Corps according to land use classifications, which are dictated by the Corps' policies and guidance. The Corps' 2011 Master Plan (Attachment 02) classifies land at the Basin in six (6) land use classifications: 1) Project Operations; 2) Recreation; 3) Environmentally Sensitive; 4) Multiple Resource Management - Recreation - Low Density; 5) Multiple Resource Management - Vegetative Management; and 6) Multiple Resource Management - Inactive and/or Future Recreation. The Corps' Master Plan provides guidance for balancing flood risk management requirements, recreation opportunities, and preservation of natural resources for current and future generations. In addition, the Corps established the River Recreation Zone (RRZ) in 2014. The RRZ is a Corps approved use in the Basin.

While the majority of the City's desired projects are not specifically described in the EA, they fall into either the Recreation-Low Density, Recreation, or Vegetative Management use classifications. Some of the projects are in unclassified areas or are within areas where the proposed use may not be consistent with the use classification. Project 4 – a Project related to “Enhancement for Pedestrian and Cycling Experience” in the attached map (Attachment 05) proposes to enhance three (3) boulevards with traffic calming measures to enhance pedestrian and bicycling experience. This is not explicitly mentioned in the Corps' environmental documents, though the Corp's Master Plan does discuss concerns about roadways, bicycles, pedestrian and habitat interaction. The City has prioritized these enhanced pedestrian and cycling facilities for the Vision Plan. The area proposed for Project 11 -Trails and Vegetative Management is in the East Sepulveda Basin on the Proposed Project Map and portion of the project falls under the Environmentally Sensitive land use classification.

The Vision Plan team shall follow the EA. No recreation activities are allowed in the Project Operations areas, though the Corps does allow some uses. Projects within Army Corps-controlled real property are subject to the Corp's Outgrant Policy, which will also determine what environmental documentation is required for the proposed action.

SCOPE OF SERVICES / DELIVERABLES:

The Consultant shall perform the following items of work for the delivery of the Project. BOE is looking for a Vision Plan consultant team with the ability to achieve the following objectives. The detailed scope of work can be seen in Tasks I through VI included below.

- a. Assemble a comprehensive team of expert professionals for the execution of a Sepulveda Basin Vision Plan, as described in this TOS.
- b. Coordinate all sub-consultant services needed to complete the work and allow sufficient time to review and correct the work of subconsultants prior to submission of the deliverables. All meetings that Consultants are required to attend shall also include subconsultants as appropriate.
- c. Provide an experienced Project Manager who will oversee the consultant team on a day-to-day basis for the duration of the task, and who will coordinate closely with the BOE Project Manager.
- d. Coordinate all work activities with the BOE Project Manager, which includes but is not limited to: coordination of all meetings; preparation of meeting materials and meeting minutes; organization of deliverables; identification of issues; providing recommendations on solutions to issues that arise; providing sufficient consultant resources; management of subconsultants; following the BOE Project Manager's direction; providing feedback, and coordination of all other matters related to the development of the Vision Plan and all of the components outlined here.
- e. Attend coordination meetings anticipated to be once every two (2) weeks with the BOE Project Management team, and once every month with the City staff coordination team.
- f. Expert facilitation of the public meeting process.
- g. Coordinate and facilitate Community meetings.
- h. Develop a public engagement program. Work with BOE to update and maintain a project website. Prepare project information sheets, proper public meeting notifications, and other informational public materials as required. Prepare public presentations, renderings, physical models, digital fly-throughs, graphics and presentation materials for community meetings in collaboration with the BOE Project Manager.
- i. Management of the stakeholder and community information and input process, including public meetings, surveys, on-line communications, press releases, and the creation and maintenance of the project website.
- j. Formulation of and completion of appropriate technical studies, and visual and design studies and analyses required to support the Vision Plan process and to support the conclusions that result from the work.

- k. Production of graphs, renderings, site plans, models, fly-throughs and other physical, visual and graphic material that can be used to explain the process and the conclusions to the public and to policy makers.
- l. Authorship of the Vision Plan in draft and final form, with associated visuals and with a final, comprehensive list of reference documents and work products. A final visual Master Plan presentation must also be created. The final Master Plan document should be print ready and formatted to be effectively posted on the Project website.
- m. Submit monthly progress reports (actual work vs. planned work), in accordance with the work plan and schedule. Update the work plan and schedule as needed.
- n. Submit timely invoices, with updated Business Inclusion Program utilization profiles corresponding to each invoice.
- o. Provide all documentation in electronic format.

The Consultant shall complete the following tasks and deliverables for the Vision Plan in addition to the items listed above. The Consultant shall work with BOE to schedule these Tasks, and it is anticipated that there will be overlaps to the Tasks in order to achieve a full Draft Vision Plan in 16 months.

1. Task I: Project Initiation:

- a. Meet with City staff project team to develop and finalize a detailed work plan to complete the Vision Plan, which at a minimum will describe the tasks to be performed, establish required meetings and presentations and clarify roles and responsibilities of both City staff and Consultant team.
- b. Develop and maintain a Microsoft Project work schedule of the Vision Plan process that consists of:
 - tasks to be performed
 - durations
 - start and end dates
 - task relationships
 - all significant tasks such as workshops, reviews, preparation of a Draft Vision Plan, completion of the Final Vision Plan, etc. shall be included in the work schedule.
- c. Deliverables:
 - meeting minutes
 - work plan and project schedule.

2. Task II: Research, Analysis, Agency Input and Input from Organized Stakeholder Groups

- a. Acquire, analyze, validate, and describe all existing information related to the project and the project site. This includes all relevant documents as listed in the attachments, as well as any other past

studies and planning documents related to the Basin that the Consultant identifies.

- b. Perform field site reviews and investigations, including walk-throughs with staff members most knowledgeable about the maintenance, operations, condition and use of the various site components.
- c. Conduct meetings and/or interviews with government, non-profit and public representatives such as the Los Angeles Department of Recreation and Parks, Council District No. 6, the Mayor's office, Army Corps of Engineers, LA Sanitation and Environment, Los Angeles Department of Transportation (LADOT), the Mountains Recreation and Conservation Authority, LA28 Committee, and other organized stakeholder groups that operate in the Basin such as the volunteers who support the Japanese Garden, the model airplane area, the cricket clubs, etc., to identify existing site challenges, environmental constraints, desired improvements, and their preferred future vision – estimated minimum of fifteen (15) meetings. This data should be systematically collected and collated using a standard survey document which could also be distributed digitally for feedback from additional groups not interviewed in person. See Attachment 07 for a partial listing of important stakeholder groups.
- d. After an initial review of background data, existing site conditions, and initial outreach to stakeholders and elected officials, one of the first tasks for the selected Consultant shall be to draft and vet a detailed and topically organized list of Vision Plan objectives, and using this, to refine the detailed Vision Plan scope of work delivery schedule.
- e. Convene additional meetings with public stakeholder groups that will provide more feedback and direction throughout the process. Review, confirm and/or recommend modifications to the Vision Plan design objectives based upon this input. External stakeholders include but are not necessarily limited to: Neighborhood Councils, homeowner associations, residents, nearby businesses, other organized groups in the area, and other interested City residents with an interest in the Project. This should include communities that are immediately adjacent to the Basin, and other community groups in the Valley since this is a regional project. A partial list of community groups is attached (Attachment 07).
- f. Identify governmental agencies which have regulatory jurisdiction over any future alteration within the project boundaries and

understand and document the requirements and procedures of these agencies.

- g. Evaluate the existing site features in terms of condition, need for upgrade, visual quality, environmental quality, and public use value.
- h. Identify potential environmental constraints and describe potential mitigations for the environmental clearances that will be required to execute projects.
- i. Utilities
 - Perform a preliminary utility and infrastructure search. Utilities and infrastructure elements may consist of, but are not limited to, the following: Los Angeles Department of Water and Power (LADWP) Potable Water lines; LADWP Electric lines; LADWP Recycled Water lines; Bureau of Street Lighting (BSL) poles; SoCal Gas lines; SoCal Edison lines; Telecommunication lines; LA Sanitation and Environment's Sewer and Storm Drain lines; and any other utility and infrastructure elements that exist in the Basin.
- j. Drainage
 - Understand and characterize existing drainage patterns in the Basin, including flooding patterns to evaluate proposed project elements and conflicts with proposed scopes of project work.
 - Identify and acquire hydraulic and hydrology information previously produced for the Basin and characterize the constraints this information establishes.
- k. Deliverables:
 - Summary of meeting notes. Rollup of digital survey, and analysis of information received.
 - Draft and final versions of Research and Analysis findings
 - Submit monthly progress reports (actual work vs. planned work), in accordance with the work plan and schedule. Update the work plan and schedule as needed.

3. Task III: Community Outreach and Public Participation

- a. Planning and Design Workshops: Consultants shall prepare and conduct a community design input process that will allow for the maximum public participation through a variety of strategies, including but not limited to: stakeholder design meetings; public design workshops; focus groups; and social media design posts at major milestones and as required throughout the planning process to gain stakeholder and community insight and opinions on the

design work completed to date and to adjust priorities. Estimated minimum of twelve (12) meetings, which include six (6) design meetings, three (3) large community meetings and three (3) smaller, focused meetings.

- b. The Consultant shall prepare presentation materials for these meetings, present at these meetings, prepare ancillary project information sheets and project briefings with maps and renderings, disseminate proper public meeting notifications, and manage public communications, including building on BOE's e-mail list and creating a physical mailing list for outreach and required notifications in coordination with BOE. The Consultant shall make clear input requests of the public, formulate and distribute questionnaires as needed, and prepare and circulate meeting summaries. These public meetings will offer design guidance and local expertise, but final direction will come exclusively from BOE's Project Manager.
- c. Translation: Translate key public information documents into Spanish, with the option of an additional three (3) languages for translation of key documents. Provide Spanish language translators for each large and small community meeting, with the option of adding translators for three (3) other languages.
- d. Surveys: Solicit community input using web surveys and paper surveys that will ask questions on the design and use of the property and how it should be improved. These surveys must be structured to be statistically representative and inclusive and must be in English and Spanish.
- e. Project Website: The Consultant shall develop and maintain a project website that provides information and updates about the project, a feedback section, and opportunities to get involved with the project. The project website will be accessed through the BOE website, and the Consultant shall coordinate with BOE to establish this link. The Consultant shall upload approved project related public information to maintain a current website for visitors. Information must be presented in English and Spanish.
- f. Community Outreach and Public Participation Goals: The community outreach process should seek to achieve the following:
 - Educate the public about the Vision Plan goals and objectives and the results of initial findings including constraints, opportunities and challenges.
 - It is important that the outreach include communities that are immediately neighboring and the greater Valley since this is a

regional project. The Consultant outreach shall be structured to solicit input from a diverse audience from across the Valley, including individuals who may not be able to attend meetings. The Consultant shall propose diverse ways to outreach using social media, surveys, and other means.

- Provide opportunities for input on current Project conditions, desirable amenities, activity adjacencies, etc. Solicit feedback on at least three (3) alternative concept designs presented to determine the final Vision Plan design direction.
- Plan for hybrid public meetings – all online or online and in person, depending on COVID restrictions and community preference.

g. Technical Advisory Committee Meetings: The Consultant shall coordinate and present at up to three (3) Technical Advisory Committee (TAC) meetings. The TAC will be comprised of other technical agencies and organizations having jurisdiction and oversight of this project, as well as local, state and national funding agencies, who will be able to provide guidance and support throughout the planning process.

h. Deliverables:

- Work plan detailing the community outreach strategy and timeline
- All presentation, written, graphic and social media materials
- Detailed written summary of community and public input and survey results and all other records (i.e. sign-in sheets, meetings, notes and/or video recordings).

4. **Task IV: Conceptual Design Options**

- a. The Consultant shall develop a conceptual framework to support the desired activities and provide alternative scenarios on how they could be accommodated.
- b. Based on research and analysis findings, technical advisory input, and community outreach, the Consultant shall prepare concept designs to support the desired activities and provide for review by internal and external stakeholders. This should include at least three (3) Vision Plan alternative scenarios. The three Vision Plan alternatives should:
 - Anticipate phased build out of the Vision Plan.
 - Incorporate the twelve (12) projects identified by the City, and alternatives for River restoration.
 - Provide a clear understanding of how to achieve build out of key Vision Plan components in time for the 2028 Olympics.

- c. For each Scenario, the Consultant shall, at a minimum, include:
 - An analysis of the opportunities and constraints of the Basin site
 - Order of magnitude project cost estimates for each alternative.
 - Likely phasing of implementation of each scenario
 - New Uses: Analysis of proposed projects that are in response to needs identified and criteria used.
 - The strategy for landscaping, project siting, and for pedestrian and vehicular circulation.
 - The strategy for neighborhood and community interface and connectivity.
 - Design criteria and material palette to be used for all future new onsite projects and project elements, including building materials, landform modifications, lighting, signage, furniture, plant materials, etc.
 - Biology and habitat approach
 - Approach to River restoration and flood control functions
 - Other considerations identified by community members and other interested parties
- d. The Consultant shall consider the use of stormwater design Best Management Practices (BMP's) such as infiltration systems, stormwater capture and reuse, and high efficiency biofiltration and bioretention systems.
- e. The Consultant shall use physical models, renderings, digital models, fly-throughs and other visual tools to adequately represent the three (3) alternatives.
- f. The three (3) Vision Plan alternative scenarios will be presented in public forums and will be posted on the project web site.
- g. Based on overall feedback, a final Vision Plan design will be developed, presented in public forums, and posted on the project web site. Again, appropriate visual tools must be used to adequately explain the design to the public.
- h. Sustainability
 - Determine applicable sustainability approaches to meet, address, and/or design all requirements and aspects related to the project, which are consistent with the City's goals for sustainability. This includes consideration of energy and water-efficient practices and products.
 - This project is required to comply with Envision Guidelines and must meet a goal of a Platinum target in compliance with Envision Guidelines, per the latest Edition by the Institute of

Sustainable Infrastructure. The consultant shall compile the anticipated Envision scorecard options for the final Vision Plan and preliminary Envision assessments of the three (3) scenarios to identify elements that need to be considered to satisfy Envision.

i. Deliverables, at a minimum, include:

- Context analysis drawings, design logic drawings, site plans, sections, 3-dimensional drawings, renderings or any other graphic materials needed to convey the schematic alternatives to both internal and external audiences.
- Boundary and topographical drawings.
- Brief narrative descriptions of any proposed new design features, of potential recreational and environmental improvements, including their purpose and function.
- Written comments from internal/external reviews
- Presentations to staff of the City's formal review boards as required to solicit comments and feedback.
- Presentation of schematic alternatives to stakeholders and documentation of feedback.
- Identification of permitting requirements for the proposed scenario features
- Preparation of conceptual project cost estimates and cost benefit analyses for each alternative, as well as summaries of the advantages and disadvantages of each alternative. This must include utilities. Identify and provide cost estimates for utility relocation and identify any new easements that may be required for utility relocations, and drainage areas Perform a drainage concept study for each design alternative in comparison with the existing drainage patterns and facilities, including determination of type and cost of changing drainage patterns.
- Preliminary estimated project costs should be organized to help secure funding for final design, engineering, construction and project management, and should consider phased funding.
- All written and graphic materials needed to conduct presentations.
- Monthly progress reports (actual work vs. planned work), in accordance with the work plan and schedule. Update the work plan and schedule as needed.

5. Task V: Draft Vision Plan Document

Using the materials developed during the process, develop a Draft Vision Plan document with all associated reference documents that explain the process of developing the Vision Plan, including a statement of the

conceptual framework for the Vision Plan, and a clear description of the chosen Vision Plan design.

a. Deliverables:

- Six (6) hard bound copies, one (1) electronic, print ready copy of the Draft Vision Plan Report, and a web version of the Draft Vision Plan, including all site plans, colored renderings, sections and elevation drawings; diagrams; photographs; research and analysis findings; summary of strategies utilized and comments obtained during the Community Outreach and Public Participation process; descriptions of all Vision Plan features; a proposed phasing plan, a draft itemized project construction cost estimate by the phases of development; and itemized maintenance and/or operations costs for any new feature.
- Three (3) presentations by the Consultant of the Draft Vision Plan to combined City entities with representatives from other agencies involved in the project.
- Presentation by the Consultant of the Draft Vision Plan to the public in two separate forums.
- All written, graphic and digital materials needed to conduct presentations of the Draft Vision Plan.
- Any other written, graphic or digital materials needed to explain the Draft Vision Plan.

6. Task VI: Final Vision Plan Document and Collateral Materials

Based upon comments and feedback on the Draft Vision Plan, develop the Final Vision Plan document and collateral materials, which must at minimum include the information noted below.

- a. A written, print-ready and web-ready report that addresses the objectives outlined in this TOS and objectives identified during the Vision Plan process. Appropriate plans, drawings, diagrams and graphics must be included to adequately represent the final Vision Plan design, the underlying analytic work, and the implementation strategy.
- b. Create a physical model to illustrate the Final Vision Plan design.
- c. Deliverables:
- Six (6) hard bound copies, one (1) electronic, print ready copy and a web ready version of the Final Vision Plan Report, including all site plans, colored renderings, sections and elevations drawings; diagrams; photographs; research and analysis findings; summary of strategies utilized and comments

obtained during the Community Outreach and Public Participation processes; descriptions of all Vision Plan features; a final itemized project cost estimate by phases of development; itemized maintenance and/or operations costs for any new feature; and recommendations for phased development.

- Colored renderings and diagrams of the final Vision Plan for in-person presentation purposes or displays in a large, hard copy and digital format, that can be printed on multiple sheets lined up in sequence mounted to boards.
- Digital presentation materials to be used for the City's formal review committees, various City Boards, appropriate City policy committees, Council offices, Mayor's office, and others as required.
- Presentation by the Consultant of the Final Vision Plan to the Mayor's Office, City Council District 6, the Board of Public Works, the Board of Recreation and Parks, the Army Corps of Engineers, the Santa Monica Mountains Recreation and Conservation Authority Board, LA 28, full City Council and appropriate City Council Committees, for review and/or approval. BOE will work with the Consultant to combine these presentations where feasible.
- Presentation by the Consultant of the Final Vision Plan to the public in two separate forums.
- Any other written, graphic and digital materials needed to conduct presentations.

NOTE:

The conceptual design work will be reviewed in the bi-weekly meetings with Engineering, the clients, and all agencies having jurisdiction over the project. Once the initial design concepts are reviewed by Engineering, the comments will be forwarded to the Consultant.

TASK ORDER RESPONSE REQUIREMENTS:

The format for the TOS response must be bound copies on vertically oriented 8 ½" x 11" size sheets, with fold out sheets that are 11" x 17" permitted. The responses shall not exceed 40 pages of text (excluding the appendix).

TOS Responses shall be submitted as follows:

- Six (6) originals of the TOS Response to be bound and be submitted to:

Steven Fierce, AIA, Principal Architect
Bureau of Engineering, Architectural Division
1149 South Broadway, Suite 830

- A digital/electronic copy of the TOS Response shall be submitted digitally as a PDF transmittal by e-mail to Shun Yu Zhang, Shun.Yu.Zhang@lacity.org, and to Steven Fierce, Steven.Fierce@lacity.org

Bound TOS Responses shall include the following organized as noted below:

Section 1 **Cover Letter:** One-page general statement on team composition and qualifications, and name, address, email, and telephone number for the Consultant's single point of contact

Section 2 **Project Understanding:** Explain your team's overall approach to the work. The City will focus 1) on the Consultant's demonstrated understanding of the task and the challenges, 2) on creative and innovative suggestions for an inclusive process of design and planning based on the City's stated goals, 3) on the approach to enhancing the Basin for current and new users and for the 2028 Olympics, 4) on the approach to improving access to and movement through the Basin, 5) on the approach to enhancing the habitat value of the Basin, 6) on the approach to enhancing the flood risk management role of the Basin, and 7) on the approach to enhancing the natural functioning of the River and the tributaries in the Basin, amongst other goals articulated above.

Section 3 **Related Experience:** Describe three (3) similar projects that key members of your team have recently completed where the team members were personally involved, and how it relates to the Vision Plan. Projects by the offices in which the team members work or previously worked where the staff proposed for this TOS were not personally involved will not be considered. Include the project name; a brief project description including explanatory visuals; the project location; the scope of work done on the referenced project by the team member(s) who worked on the referenced project and who is (are) proposed for this TOS; the total project consulting fee and if applicable, total project construction cost; the year or years of completion of the project elements (conceptual design, design and construction); and client references with name, phone number, and email address for an individual or individuals who personally worked with the team member on the

referenced project.

Section 4

Project Team, Project Schedule and Fee Proposal:

Provide a project team organization chart and describe background, roles and responsibilities of key team members. Provide information on MBE/WBE/SBE/EBE/DVBE/OBE subconsultant involvement. Resumes of those who will work on the project should be included in the Appendix.

Provide a detailed scope of work and an associated schedule which expands and develops the scope of work described in this TOS. The schedule should indicate the Consultant's approach to completing the Vision Plan as efficiently as possible, including milestones that could facilitate the implementation of changes to the Basin by the 2028 Olympics. Indicate how the Consultant proposes to complete the Draft Vision Plan in 16 months.

Provide a Detailed Fee Proposal in the format the City has requested (Attachment 08). The total fee cannot exceed the Not to Exceed amount noted above. Reimbursable expenses shall include costs for travel, printing, and reproduction, and fixed cost will be pre-printed indicated within the Fee Proposal.

Appendix

Team member resumes for each member of the Consultant team, and a Non-Collusion Affidavit.

The TOS Responses shall be transmitted no later than **March 25, 2022 at 3:00pm.**

SELECTION CRITERIA:

Engineering staff will numerically score the proposals based on the criteria noted below. If interviews are held, a combined final score for the proposals and the interviews for the teams who interview will also be based on the criteria noted below.

	Evaluation Criteria	
A	Demonstrated expertise and experience of the team members on similar master plan projects or related projects.	25
B	Demonstrated design excellence on projects of a similar nature and scope by the key team design members.	25
C	Demonstrated expertise in urban habitat and wildlife/human interface in the Southern California ecosystem, and expertise in River engineering and flood management.	15
D	Qualifications and abilities of the Project Manager.	10

E	Qualifications of the individual(s) identified as the lead for public meeting facilitation.	10
F	Project schedule and value to the City of the proposal.	10
G	Work plan approach as described in the proposal.	5
	Total	100

ESTIMATED PROJECT SCHEDULE:

Milestones (Per Section/Phase)

Durations

- Issue TOS 02/09/2022
- Pre-Submission Meeting 02/22/2022
- Last Day to receive Questions Regarding the Proposal 03/09/2022
- Receive Solicitation Responses 03/25/2022
- Notify Qualifying Candidates for an Interview 04/18/2022
- Interviews 04/25/2022 to 04/29/2022
- Consultant Selection and Negotiation 05/02/2022 to 05/06/2022
- Issue NTP 06/30/2022
- Draft Vision Plan Completion 16 Months
- Final Adopted Vision Plan Completion 22 Months

SERVICES AND FEE PROPOSALS:

The Consultant shall submit the fee proposal for each of the project phases noted under the Scope of Services / Deliverables section and itemize your fees accordingly, in the "Cost Fee Proposal" included in Attachment 08. Your fee quotation shall include, but not be limited to, the disciplines noted below:

At a minimum, the Consultant and their team shall be able to provide the following services as part of the prime Consultant's staff or using specialty subconsultants, with the anticipation that an individual team member can fulfill multiple disciplinary services.

1. Experienced Project Management
2. Open Space Master Planning
3. Urban Planning and Design
4. Civil Engineering/Utility Engineering
5. Landscape Architecture
6. Traffic Engineering
7. Active and Passive Recreation Facility Planning and Design
8. Biologist/Ecologist with expertise in restoration ecology and wildlife management for wildlife and ecosystem health in urban environments with human interface
Biologist/Ecologist
9. Expert Meeting Facilitation
10. Community Engagement and Public Relations

11. Written and Spoken Language Translation from English to Spanish and Access to Translation for Three (3) Other Languages as An Optional Task
12. Familiarity with City of Los Angeles Neighborhood Councils, Community Groups and Interested Non-Profit Organizations
13. Project Web Site Development and Maintenance (within duration of the project)
14. Fluvial Geomorphology, River Hydraulics and River Hydrology
15. Urban Lake Engineering
16. Flood Management and Flood Protection Engineering
17. Architecture
18. Structural Engineering
19. Mechanical Engineering
20. Electrical Engineering
21. Geotechnical Engineering
22. Project Level Cost Estimating
23. Sustainability Consulting for Envision
24. Project Phasing, Scheduling and Construction Sequencing
25. Recommendations on future California Environmental Quality Act (CEQA) and National Environmental Policy Act (NEPA) Clearances
26. Corps of Engineers Flood Management Engineering and Corps of Engineers Ecosystem Restoration Engineering
27. Expertise in assembling a comprehensive Vision Plan document and all supporting materials.

This TOS is not an authorization to start work. A NTP will be issued to authorize the start of work when the Consultant has been selected and their fee proposal has been accepted.

The requested fee proposal shall be prepared in accordance with the terms and conditions of your executed Contract.

The Consultant shall submit the names and resumes of their proposed subconsultants including the Business Inclusion Program's Schedule B Task Work Order List of Subconsultants (Attachment 09).

The fee proposal shall outline the costs per phase for each design service and each discipline, as well as an estimated cost for reimbursable expenses (Attachment 08).

The Consultant shall be required to submit the required invoices for the project on Engineering's standard Pay Request forms. A sample will be provided when the NTP is issued.

COMPENSATION SCHEDULE AND PAYMENT MILESTONES:

The Consultant shall be compensated based on the satisfactory completion of each of the project milestones indicated below. A final payment schedule will be issued to the selected consultant based on the final approved fee proposal.

Consultant Payment Schedule:

1. 25% completion of Vision Plan Work Products
2. 50% completion of Vision Plan Work Products
3. 75% completion of Vision Plan Work Products
4. 100% completion of Vision Plan Work Products

BUSINESS INCLUSION PROGRAM (MBE, WBE, SBE, EBE, DVBE, OBE) REQUIREMENTS:

It is the policy of the City to provide Minority Business Enterprise (MBE), Women Business Enterprise (WBE), Small Business Enterprise (SBE), Emerging Business Enterprise (EBE), Disabled Veteran Business Enterprise (DVBE), and all Other Business Enterprise (OBE) an equal opportunity to participate in the performance of City Contracts as subconsultants. To maximize this participation, the City implemented the Business Inclusion Program (BIP).

The BIP requires City departments to set anticipated participation levels based on the opportunities presented in their advertised TOS, and each Consultant shall assist the City in implementing this policy by taking all reasonable steps to ensure that all available business enterprises, including MBE, WBE, SBE, EBE, DVBE, and OBE have an equal opportunity to compete for and participate in City contracts.

The anticipated participation levels for this project for subconsultants are **18%** percent MBE, **4%** percent WBE, **25%** percent SBE, **8%** percent EBE and **3%** percent DVBE. Only firms certified with certifying agencies acceptable to the City will be recognized and counted toward the pledged participation levels. Note that it is the City policy that a firm can be counted in all eligible certification categories, except a firm can only be counted as either MBE or WBE, but not both.

As the prime Consultants responding to this TOS have established Schedule A's in their contracts, in the event that the Consultant is including in the proposal new subconsultants not previously listed on the Schedule A of their contract, the Consultant shall first conduct outreach in accordance with the contract's PSC-37 – Business Inclusion Program.

Prior to the final negotiation of this Task Order, the selected consultant shall be asked to submit documentation supporting outreach efforts undertaken to potential subconsultants and evaluation of selected subconsultants, for all proposed subconsultants for the Project not previously listed in the established Schedule A of the Consultant's contract.

INSURANCE REQUIREMENTS:

Insurance policies must be current and on file with the Office of the City Administrative Officer (CAO) Risk Management when the Task Order is awarded to the selected Pre-Qualified On-Call Consultant. Work cannot commence or continue if the proper proof of insurance forms are not on file with the CAO. Also, invoices will not be paid if the proper proofs of insurance forms are not on file with the CAO.

NON-COLLUSION AFFIDAVIT:

A Non-Collusion Affidavit (Attachment 10) must be signed and submitted with your proposal.

COVID-19 VACCINATION REQUIREMENTS:

Employees of Contractor and/or persons working on its behalf, including, but not limited to, subcontractors (collectively, "Contractor Personnel") must be fully vaccinated against the novel coronavirus 2019 ("COVID-19") prior to (1) interacting in person with City employees, contractors, or volunteers, (2) working on City property while performing services under this Agreement, and/or (3) coming into contact with the public while performing services under this Agreement (collectively, "In-Person Services"). "Fully vaccinated" means that 14 or more days have passed since Contractor Personnel has received the final dose of a two-dose COVID-19 vaccine series (Moderna or Pfizer-BioNTech) or a single dose of a one-dose COVID-19 vaccine (Johnson & Johnson/Janssen) and all booster doses recommended by the Centers for Disease Control and Prevention. Prior to assigning Contractor Personnel to perform In-Person Services, Contractor shall obtain proof that such Contractor Personnel has been fully vaccinated. The contractor shall retain such proof for the document retention period set forth in this Agreement. The contractor shall grant medical or religious exemptions to Contractor Personnel as required by law.

PROJECT MANAGER

All questions and written notices shall be forwarded to the Project Manager:

Shun Yu Zhang, Civil Engineer
Bureau of Engineering, Architectural Division
1149 South Broadway, Suite 830
Los Angeles, CA 90015
E-mail: Shun.Yu.Zhang@lacity.org

DISCLAIMER:

The BOE may or may not decide to award any or part of this Task Order in one or multiple NTPs based on its sole convenience and shall not be responsible for any solicitation response costs. Furthermore, the schedule of any or part of this Task Order is dependent on the availability of funding and can be postponed at any time.

The BOE reserves the right to award none, some or all parts of the proposal to the selected Consultant, as well as reserves the right to reject any and all proposals.

Furthermore, The BOE reserves the right to issue additional TOSs, if necessary, to complete parts of the scope of work, and work that may logically follow the work of this TOS.

PRE-SUBMISSION MEETING:

The City will conduct a Non-Mandatory pre-submission virtual meeting for this TOS at the following date and time:

- Pre-Submission Meeting: **February 22, 2022** at 9:30 a.m.

Participants shall make reservations no later than 12:00 PM February 21, 2022 by emailing shun.yu.zhang@lacity.org with the following information:

- 1) Participant Name
- 2) Participant Position
- 3) Company Name
- 4) Phone Number
- 5) Email Address

A link to the virtual meeting will be replied back to the email address provided along with the meeting reservation confirmation.

Sincerely,



Steven Fierce, AIA
Principal Architect
Architectural Division

SF/NM:sz

Q: \Admin\Typed Documents\2022\ XX

cc: Nur Malhis, Engineering
Shun Yu Zhang, Engineering

LIST OF ATTACHMENTS:

1. Santa Monica Mountains Recreation and Conservation Authority--the Los Angeles River Recreation Zone, 2022. Source: <http://lariverrecreation.org>

2. Sepulveda Dam Basin Master Plan and Environmental Assessment, United States Army Corps of Engineers, 2011.
3. City of Los Angeles Los Angeles River Revitalization Master Plan, 2007.
4. Santa Monica Mountains Conservancy Upper Los Angeles River and Tributaries Revitalization Plan, 2020. Source: <https://www.upperlariver.org>
5. Proposed Project Map, Bureau of Engineering, 2022.
6. Scope Description of the Identified Projects, Bureau of Engineering, 2022.
7. List of Community Groups, Bureau of Engineering, 2022.
8. Consultant Fee Proposal Spreadsheet, Bureau of Engineering, 2022.
9. Schedule B, Bureau of Engineering, 2022.
10. Non-Collusion Affidavit, Bureau of Engineering, 2022.

SCO ID: 3810-GF-2184

STATE OF CALIFORNIA

AGREEMENT SUMMARY

STD 215 (Rev. 04/2020)

AGREEMENT NUMBER

3810-GF-2184

AMENDMENT NUMBER

☐ CHECK HERE IF ADDITIONAL PAGES ARE ATTACHED

1. CONTRACTOR'S NAME City of Los Angeles, Bureau of Engineering (Sepulveda Basin River Planning)		2. FEDERAL I.D. NUMBER 95-6000735
3. AGENCY TRANSMITTING AGREEMENT Santa Monica Mountains Conservancy	4. DIVISION, BUREAU, OR OTHER UNIT Grants	5. AGENCY BILLING CODE 010507
6a. CONTRACT ANALYST NAME Ms. Rorie Skei	6b. EMAIL skei@smmc.ca.gov	6c. PHONE NUMBER (310)589-3230

7. HAS YOUR AGENCY CONTRACTED FOR THESE SERVICES BEFORE?

☒ No ☐ Yes (If Yes, enter prior Contractor Name and Agreement Number)

PRIOR CONTRACTOR NAME

PRIOR AGREEMENT NUMBER

8. BRIEF DESCRIPTION OF SERVICES

Sepulveda Basin River Restoration Planning within the Sepulveda Basin Master Plan.

9. AGREEMENT OUTLINE (Include reason for Agreement: Identify specific problem, administrative requirement, program need or other circumstances making the Agreement necessary; include special or unusual terms and conditions.)

Sepulveda Basin River Restoration Planning within the Sepulveda Basin Master Plan, in accordance with the Santa Monica Mountains Conservancy Board Materials dated December 13, 2021.

10. PAYMENT TERMS (More than one may apply)

- ☐ Monthly Flat Rate
 ☐ Quarterly
 ☐ One-Time Payment
 ☐ Progress Payment
- ☐ Itemized Invoice
 ☐ Withhold _____ %
 ☐ Advanced Payment Not To Exceed _____ or _____ %
- ☒ Reimbursement / Revenue
- ☐ Other (Explain) _____

11. PROJECTED EXPENDITURES

FUND TITLE	ITEM	FISCAL YEAR	CHAPTER	STATUTE	PROJECTED EXPENDITURES
<input type="checkbox"/> General Fund	3810-101-0001	21/22	240	2021	\$950,000.00
<input type="checkbox"/>					
<input type="checkbox"/>					
<input type="checkbox"/>					
<input type="checkbox"/>					
<input type="checkbox"/>					

OBJECT CODE

AGREEMENT TOTAL **\$950,000.00**

OPTIONAL USE

AMOUNT ENCUMBERED BY THIS DOCUMENT

\$950,000.00

PRIOR AMOUNT ENCUMBERED FOR THIS AGREEMENT

\$0.00

I certify upon my own personal knowledge that the budgeted funds for the current budget year are available for the period and purpose of the expenditure stated above.

TOTAL AMOUNT ENCUMBERED TO DATE

\$950,000.00

ACCOUNTING OFFICER'S SIGNATURE

ACCOUNTING OFFICER'S NAME (Print or Type)

DATE SIGNED

Nhing Bui

Nhing Bui

STATE OF CALIFORNIA
AGREEMENT SUMMARY

STD 215 (Rev. 04/2020)

AGREEMENT NUMBER

3810-GF-2184

AMENDMENT NUMBER

12. AGREEMENT

AGREEMENT	TERM FROM	TERM THROUGH	TOTAL COST OF THIS TRANSACTION	BID, SOLE SOURCE, EXEMPT
Original	12/13/2021	6/30/2024	\$950,000.00	Exempt
<input type="checkbox"/> Amendment 1				
<input type="checkbox"/> Amendment 2				
<input type="checkbox"/> Amendment 3				
TOTAL			\$950,000.00	

13. BIDDING METHOD USED

- ☐ Request for Proposal (RFP) (Attach justification if secondary method is used)
 ☐ Use of Master Service Agreement
☐ Invitation for Bid (IFB)
 ☐ Exempt from Bidding (Give authority for exempt status)
 ☐ Sole Source Contract (Attach STD. 821)
☒ Other (Explain) N/A - Local Assistance

Note: Proof of advertisement in the State Contracts Register or an approved form STD. 821, Contract Advertising Exemption Request, must be attached

14. SUMMARY OF BIDS (List of bidders, bid amount and small business status) (If an amendment, sole source, or exempt, leave blank)

N/A - Local Assistance

15. IF AWARD OF AGREEMENT IS TO OTHER THAN THE LOWER BIDDER, EXPLAIN REASON(S) (If an amendment, sole source, or exempt, leave blank)

N/A - Local Assistance

16. WHAT IS THE BASIS FOR DETERMINING THAT THE PRICE OR RATE IS REASONABLE?

N/A - Local Assistance

17a. JUSTIFICATION FOR CONTRACTING OUT (Check one)

- ☐ Contracting out is based on cost savings per Government Code 19130(a). The State Personnel Board has been so notified.
 ☐ Contracting out is justified based on Government Code 19130(b). When this box is checked, a completed JUSTIFICATION - CALIFORNIA CODE OF REGULATIONS, TITLE 2, SECTION 547.60 must be attached to this document.
☒ Not Applicable (Interagency / Public Works / Other _____)

17b. EMPLOYEE BARGAINING UNIT NOTIFICATION

- ☒ By checking this box, I hereby certify compliance with Government Code section 19132(b)(1).

AUTHORIZED SIGNATURE

Rorie Skei

SIGNER'S NAME (Print or Type)

Ms. Rorie Skei

DATE SIGNED

3/10/2022

18. FOR AGREEMENTS IN EXCESS OF \$5,000: Has the letting of the agreement been reported to the Department of Fair Employment and Housing? ☐ No ☐ Yes ☒ N/A

19. HAVE CONFLICT OF INTEREST ISSUES BEEN IDENTIFIED AND RESOLVED AS REQUIRED BY THE STATE CONTRACT MANUAL SECTION 7.10? ☐ No ☐ Yes ☒ N/A

20. FOR CONSULTING AGREEMENTS: Did you review any contractor evaluations on file with the DGS Legal Office? ☐ None on file ☐ No ☐ Yes ☒ N/A

21. IS A SIGNED COPY OF THE FOLLOWING ON FILE AT YOUR AGENCY FOR THIS CONTRACTOR?

A. Contractor Certification Clauses

B. STD 204 Vendor Data Record

☐ No ☐ Yes ☒ N/A☐ No ☒ Yes ☐ N/A

22. REQUIRED RESOLUTIONS ARE ATTACHED

☐ No ☒ Yes ☐ N/A

23. IS THIS A SMALL BUSINESS AND/OR A DISABLED VETERAN BUSINESS CERTIFIED BY DGS?

☒ No ☐ Yes

SB/DVBE Certification Number:

24. ARE DISABLED VETERANS BUSINESS ENTERPRISE GOALS REQUIRED? (If an amendment, explain changes if any)

N/A - Local Assistance

☒ No (Explain below) ☐ Yes _____ % of Agreement

25. IS THIS AGREEMENT (WITH AMENDMENTS) FOR A PERIOD OF TIME LONGER THAN THREE YEARS?

N/A - Local Assistance

☐ No ☒ Yes (If Yes, provide justification below)

STATE OF CALIFORNIA
AGREEMENT SUMMARY
STD 215 (Rev. 04/2020)

AGREEMENT NUMBER

3810-GF-2184

AMENDMENT NUMBER

I certify that all copies of the referenced Agreement will conform to the original agreement sent to the Department of General Services.

SIGNATURE

Rorie Skei

NAME/TITLE (Print or Type)

Ms. Rorie Skei, Chief Deputy Director

DATE SIGNED

3/10/2022

STATE OF CALIFORNIA

AGREEMENT SUMMARY

STD 215 (Rev. 04/2020)

AGREEMENT NUMBER

3810-GF-2184

AMENDMENT NUMBER

JUSTIFICATION - CALIFORNIA CODE OF REGULATIONS, TITLE 2, SECTION 547.60

In the space provided below, the undersigned authorized state representative documents, with specificity and detailed factual information, the reasons why the contract satisfies one or more of the conditions set forth in Government Code section 19130(b). Please specify the applicable subsection. Attach extra pages if necessary.

N/A - Local Assistance

The undersigned represents that, based upon his or her personal knowledge, information or belief the above justification correctly reflects the reasons why the contract satisfies Government Code section 19130(b).

SIGNATURE <i>Rorie Skei</i>	NAME/TITLE(Print or Type) Ms. Rorie Skei, Chief Deputy Director	DATE SIGNED 3/10/2022	
PHONE NUMBER (323) 221-8900	STREET ADDRESS 570 West Avenue 26, Suite 100		
EMAIL grants@smmc.ca.gov	CITY Los Angeles	STATE CA	ZIP 90065

STATE OF CALIFORNIA - DEPARTMENT OF GENERAL SERVICES

STANDARD AGREEMENT

STD 213 (Rev. 04/2020)

AGREEMENT NUMBER

3810-GF-2184

PURCHASING AUTHORITY NUMBER (If Applicable)

1. This Agreement is entered into between the Contracting Agency and the Contractor named below:

CONTRACTING AGENCY NAME

Santa Monica Mountains Conservancy

CONTRACTOR NAME

City of Los Angeles, Bureau of Engineering (Sepulveda Basin River Planning)

2. The term of this Agreement is:

START DATE

12/13/2021

THROUGH END DATE

6/30/2024

3. The maximum amount of this Agreement is:

\$950,000.00

4. The parties agree to comply with the terms and conditions of the following exhibits, which are by this reference made a part of the Agreement.

Exhibits	Title	Pages
Exhibit A	Scope of Work	1
Exhibit B	Budget Detail and Payment Provisions	1
Exhibit C *	General Terms and Conditions	24
+ - Exhibit E	Additional General Provisions	

Items shown with an asterisk (*), are hereby incorporated by reference and made part of this agreement as if attached hereto.

These documents can be viewed at <https://www.dgs.ca.gov/OLS/Resources>

IN WITNESS WHEREOF, THIS AGREEMENT HAS BEEN EXECUTED BY THE PARTIES HERETO.

CONTRACTOR

CONTRACTOR NAME (If other than an individual, state whether a corporation, partnership, etc.)

City of Los Angeles, Bureau of Engineering

CONTRACTOR BUSINESS ADDRESS

1149 South Broadway, Suite 700

CITY

Los Angeles

STATE

CA

ZIP

90015

PRINTED NAME OF PERSON SIGNING

Mr. Gary Lee Moore

TITLE

City Engineer

CONTRACTOR AUTHORIZED SIGNATURE

Gary Lee Moore

DATE SIGNED

03/07/2022

STATE OF CALIFORNIA

CONTRACTING AGENCY NAME

Santa Monica Mountains Conservancy

CONTRACTING AGENCY ADDRESS

570 West Avenue 26, Suite 100

CITY

Los Angeles

STATE

CA

ZIP

90065

PRINTED NAME OF PERSON SIGNING

Ms. Rorie Skei

TITLE

Chief Deputy Director

CONTRACTING AGENCY AUTHORIZED SIGNATURE

Rorie Skei

DATE SIGNED

3/10/2022

CALIFORNIA DEPARTMENT OF GENERAL SERVICES APPROVAL

EXEMPTION (If Applicable)

EXHIBIT A
(Standard Agreement)

SCOPE OF WORK

1. Contractor agrees to provide to the Santa Monica Mountains Conservancy (SMMC) the following as described herein:
Sepulveda Basin River Restoration Planning within the Sepulveda Basin Master Plan, with Board Materials date December 13, 2021.
2. The services shall be performed within the Santa Monica Mountains Conservancy Zone.
3. The services shall be provided during normal business hours.
4. The project representatives during the term of this agreement will be:

State Agency: Santa Monica Mountains Conservancy	Contractor: City of Los Angeles
Name: Ms. Rorie Skei	Name: Mr. Gary Lee Moore
Phone: (310) 589-3230 ext. 112	Phone: (213) 485-4935
Fax: (310) 985-5102	Fax:

Direct all inquiries to:

State Agency: Santa Monica Mountains Conservancy	Contractor: City of Los Angeles
Section/Unit: Government Programs	Section/Unit: Bureau of Engineering
Attention: Budgets, Grants, and Contracts Officer	Attention: Mr. Gary Lee Moore
Address: 570 West Avenue 26, Suite 100 Los Angeles, California 90065	Address: 1149 S. Broadway, Suite 700 Los Angeles, California 90015-2213
Phone: (323) 221-8900 x 144	Phone: (213) 485-4935
Email: valdez@smmc.ca.gov	Fax:

EXHIBIT B
(Standard Agreement)

BUDGET DETAIL AND PAYMENT PROVISIONS

1. Invoicing and Payment

- A. For services satisfactorily rendered, and upon receipt and approval of the invoices, the State agrees to compensate the contractor for actual expenditures incurred in accordance with the rates specified herein, which is attached hereto and made a part of this Agreement.
- B. Invoices shall include the Agreement Number and shall be submitted in triplicate not more frequently than monthly in arrears to:

Santa Monica Mountains Conservancy
Attn: Budgets, Grants and Contracts Officer
570 West Avenue 26, Suite 100
Los Angeles, CA 90065

- C. Refer to additional billing information for more details.

2. Budget Contingency Clause

- A. It is mutually agreed that if the Budget Act of the current year and/or any subsequent years covered under this Agreement does not appropriate sufficient funds for the program, this Agreement shall be of no further force and effect. In this event, the State shall have no liability to pay any funds whatsoever to Contractor or to furnish any other considerations under this Agreement and Contractor shall not be obligated to perform any provisions of this Agreement.
- B. If funding for any fiscal year is reduced or deleted by the Budget Act for purposes of this program, the State shall have the option to either cancel this Agreement with no liability occurring to the State, or offer an agreement amendment to Contractor to reflect the reduced amount.

3. Prompt Payment Clause

Payment will be made in accordance with, and within the time specified in, Government Code Chapter 4.5, commencing with Section 927.

Additional General Provisions

A. Definitions

1. The term “Act” as used herein means the GF: General Fund.
2. The term “CEQA” as used herein means the California Environmental Quality Act, Public Resources Code Section 21000 et. Seq; Title 14, California Code of Regulations Section 15000 et. seq.
3. The term “Contract” as used herein means an agreement between the State and Grantee specifying the payment of Grant Money by the State for the performance of Project goals within the Project Performance Period by the Grantee.
4. The term “Grantee” as used herein means the party described as the Grantee on page 1 of this Contract.
5. The term “Grant Moneys” as used herein means funds derived from the sale of bonds authorized by the Act.
6. The term “Project” as used herein means the project described in Section B of Exhibit E.
7. The term “Project Performance Period” as used herein means the period of time that the Grant Moneys are available, and the time in which the Project must be complete, billed and paid as described in Section C of Exhibit E.
8. The term “State” as used herein means the Santa Monica Mountains Conservancy.
9. The term “Contractor” as used herein means the party described as the Grantee on page 1 of this Contract.

B. Project Description

The Grantee shall be responsible for Sepulveda Basin River Restoration Planning within the Sepulveda Basin Master Plan, in accordance with Conservancy Board materials dated December 13, 2021 (attached). Grantee shall ensure that the

Conservancy receives full recognition for providing funding under this Grant Agreement in any and all publication of the deliverables under this Grant Agreement. Examples include, but are not limited to, signage recognizing the contribution at any physical project sites and the Conservancy's name and logo on any and all materials, press releases and publicity materials, documents, websites, or other forms of presentation regarding this project. The Conservancy shall have the right to use any and all such materials produced as a result of this Grant Agreement.

For Projects that involve land acquisition:

- 1.1 Prior to purchasing fee title or a lesser interest in eligible land, the Grantee (buyer) must submit necessary information to the Grant Manager. This information must include:
 - 1.1.1 An estimate of the current fair market value of the land interest to be purchased. To establish the fair market value, the Grantee will obtain one independent appraisal. One independent review appraisal will be required to review all appraisal reports and to prepare a written report of the review. All appraisals and the review appraisal must be prepared by real property appraisers currently licensed by the State of California Office of Real Estate Appraisers as a Certified General Appraiser.
 - 1.1.2 A written statement of the proposed procedure and timing of the purchase of the land interest.
 - 1.1.3 A written statement that the land is suitable for its intended uses, and that the Grantee is solely responsible for the mitigation of a hazardous material that may be found during the development of the site.
 - 1.1.4 If not included in the appraisals, an adequate map showing the location of the proposed project including the land/easement proposed for purchase. Adequacy will be determined by the Grant Manager.
- 1.2 Open an escrow account with an institution licensed by the California Department of financial Institutions and obtain the services of an escrow company that has complied with the requirements of Division 6 of the California financial code, commencing with Section 17000.
- 1.3 Provide the escrow company with the Purchase and Sale Agreement outlining the terms and conditions by June 30, 2024.

- 1.3.1 Execute and deliver to the Grant Manager an original of the Purchase and Sale Agreement to include the terms of escrow and the seller's restrictions during the term of the escrow, if any.
- 1.3.2 Provide the escrow company with all required deposit amounts and required insurance information.
- 1.3.3 Processing of grant deeds shall occur as part of the escrow instructions, and the grant deed will be recorded when all escrow instructions have been completed and immediately after escrow closes on or before June 30, 2024. If all of the property interest is not purchased, any funds disbursed under this Agreement must be returned to the Santa Monica Mountains Conservancy and any penalties for arbitrage on interest earned will be paid by the Grantee.
- 1.3.4 Close escrow and finalize the acquisition.

C. Project Period

The project period shall be from December 13, 2021 to June 30, 2024, unless such time period is extended by the State.

D. Project Execution

1. Subject to the availability of Grant Moneys in the Act, the State hereby grants to the Grantee a sum of money (Grant Money) not to exceed the amount stated on page 1 of this contract in consideration of and on condition that the sum be expended in carrying out the purpose as set forth in the Description of Project and under the terms and conditions set forth in this Contract.

Unless otherwise determined by the State, Grantee agrees to assume any obligation to furnish any additional funds that may be necessary to complete the Project. Any modification or alteration in the Project as set forth in the Application on file with the State must be submitted to the Executive Director of State for approval.

2. (Only if a match is required) The State and the Grantee hereby agree and acknowledge that the State's obligation to disburse the Grant Moneys under this Contract are explicitly conditioned upon Grantee's securing matching funds on a 1:1 ratio to the total amount approved by this Contract. Grantee will have the obligation to provide the State with proof of said matching funds as part of Grantee's payment requests and/or invoices to the State. In the event that Grantee is unable to provide proof of secured matching funds equal to the total Grant Moneys requested in any particular payment request/invoice, the State shall have no obligation to disburse any further Grant Moneys until such proof is provided.
3. Grantee agrees to complete the Project in accordance with the time of Project Performance Period, and under the terms and conditions of this Contract.
4. Grantee shall comply as lead agency with a California Environmental Quality Act (Public Resources Code, Section 21000, et seq.)
5. If the Project includes development, the Grantee shall comply with all applicable current laws and regulations affecting development projects, including, but not limited to, laws affecting health and safety, hazardous materials, historical preservation, environmental impacts, building standards, and the like.
6. Grantee agrees to permit periodic site visits by the State to determine if development work is in accordance with the approved Project Description including a final inspection upon Project completion.
7. Grantee agrees to submit any significant deviation from the original Project Description to the Executive Director of State for prior approval.
8. If the Project includes acquisition of real property, the Grantee agrees to comply with all applicable state and local laws or ordinances affecting relocation and real property acquisition. Documentation of such compliance will be made available for review upon request by the State.
9. Grantee agrees to provide reasonable public access to lands acquired in fee with Grant Moneys except where that access may interfere with habitat protection.
10. Grantee agrees to comply with applicable prevailing wage requirements.

11. All informational products (e.g., data, studies, findings, management plans, manuals, photos, etc.) relating to California's natural environment and produced with the use of public funds shall be cataloged in the California Environmental Information Catalog (<http://gis.ca.gov/catalog/>) maintained by the CERES Program (www.ceres.ca.gov).
12. To the extent that such state rates are available to Grantees, Grantee agrees to abide by travel expenses and per diem rates set at the rate specified by the Department of Personnel Administration for similar employees. In the event that such state rates are not available, actual travel expenses in excess of state rates will be reimbursed only upon certification that state rates were not available.
13. Recipients of grant funding shall post signs and/or include appropriate documentation within the deliverables of the Grant acknowledging the source of the funds pursuant to direction and approval by the Conservancy. The Conservancy may withhold the final disbursement pending acknowledgement of the funding source in the manner approved by the Conservancy.

E. Project Costs

The Grant Moneys to be provided Grantee under this Contract may be disbursed as follows:

1. For acquisition Projects: Acquisition of real property shall be from a willing seller of a fee interest or any other interest. The State may disburse to Grantee the amount of the purchase price together with cost allocation or overhead and incident acquisition costs.
2. For development Projects: The State may disburse to Grantee the Grant Moneys on proof of award of a construction contract or commencement of construction by force account including cost allocation and project administration costs, up to one hundred percent of the total Grant, or the actual cost, whichever is less.
3. The dollar amount of an item in the Project Budget may be increased by up to ten percent (10%) through reallocation of funds from another item or items, without approval by the Conservancy; however, the Grantee shall notify the Conservancy in writing when any such reallocation is made and shall identify both the item(s) being increased

and those being decreased. Any increase or decrease of more than ten percent (10%) in the amount of an item must be approved in writing by the State. The total amount of the Grant Funds may not be increased without Board Approval.

4. Indirect costs are costs that have been (1) incurred for common or joint objectives and (2) cannot be readily identified with a particular project or program. The Conservancy encourages Grantees to keep these costs as low as possible and requests information regarding these costs with the Grantee Data Sheet. These costs are to be stated in the agreement budget as a separate line item.

F. Work Products

1. Grantee shall ensure that the Conservancy receives full recognition for providing funding under this Grant Agreement in any and all publication of the deliverables under this Grant Agreement. Examples include, but are not limited to, signage recognizing the contribution at any physical project sites and the Conservancy's name and logo on any and all materials, documents, websites, or other forms of presentation regarding this project. The Conservancy shall have the right to use any and all such materials produced as a result of this Grant Agreement.
2. All material, data, information, and written, graphic or other work produced, developed or acquired under this agreement is subject to the unqualified and unconditional right of the Conservancy to use, reproduce, publish, display, and make derivative use of all such work, or any part of it, free of charge and in any manner and for any purpose; and to authorize others to do so. If any of the work is subject to copyright, trademark, service mark, or patent, the Conservancy is granted and shall have a perpetual, royalty-free, nonexclusive and irrevocable license to use, reproduce, publish, use in the creation of derivative works, and display and perform the work, or any part of it, and to grant to any third party a comparable and coextensive sublicense.
2. The grantee shall include in any contract with a third party for work under this agreement terms that preserve the rights, interests, and obligations created by this section, and that identify the Conservancy as a third-party beneficiary of those provisions.
3. The grantee shall not utilize the work produced under this agreement for any profit-making venture, or sell or grant rights to a third party for that purpose.

G. Project Administration

1. Grantee agrees to promptly submit project status reports as the State may request. Failure to submit such project status reports in a timely manner may result in stop payments for future payment requests until such reports are submitted. Grantee shall provide State a report showing total final Project expenditures.
2. Grantee agrees that property and facilities acquired or developed pursuant to this Contract shall be available for inspection upon request by the State.
3. Grantee agrees that income earned by the Grantee from use of the Project shall be used to further Project purposes, or, if approved by the State, for related purposes within the Grantee's jurisdiction.

G. Project Termination

1. Grantee may unilaterally rescind this Contract at any time prior to the commencement of the Project. After Project commencement this Contract may be rescinded, modified or amended by mutual agreement in writing.
2. Failure by the Grantee to comply with material terms of this Contract or any other Contract under the Act may be cause for suspension of all obligations of the State hereunder.
3. Failure of the Grantee to comply with the terms of this Contract shall not be cause for the suspension of all obligation of the State hereunder if in the judgment of the Executive Director of State such failure was due to no fault of the Grantee. In such case, any amount required to settle at minimum cost any irrevocable obligations properly incurred shall be eligible for reimbursement under this Contract.
4. Because the benefit to be derived by the State, from the full compliance by the Grantee with the terms of this Contract, is the preservation, protection and net increase in the quantity and quality of parks, public recreation facilities and/or historical resources available to the people of the State of California and because such benefit exceeds to an immeasurable and unascertainable extent the amount of money furnished by the State by way of Grant Moneys under the

provisions of this Contract, the Grantee agrees that payment by the Grantee to the State of an amount equal to the amount of the Grant Moneys disbursed under this Contract by the State would be inadequate compensation to the State for any material breach by the Grantee of this Contract. The Grantee further agrees therefore, that the appropriate remedy in the event of a breach by the Grantee of this Contract shall be the specific performance of this Contract.

5. Grantee and State agree that if the Project includes development, final payment may not be made until the Project conforms substantially to this Contract and is a useable facility.

H. Financial Records

1. The State may audit the Project. If so, the Grantee will be notified at least 30 days in advance. The audit may occur up to three years after the final payment of Grant Moneys.
2. Grantee agrees to maintain satisfactory financial accounts, documents and records for the Project and to make them available to the State for auditing at reasonable times. Grantee also agrees to retain such financial accounts, documents and records for three years following Project termination or completion.

Grantee and State agree that during regular office hours each of the parties hereto and their duly authorized representative shall have the right to inspect and make copies of any books, records or reports of the other party pertaining to this agreement or matters related thereto. Grantee agrees to maintain and make available for inspection by the State accurate records of all of its costs, disbursements and receipts with respect to its activities under this Contract.

3. Grantee agrees to use a generally accepted accounting system.

I. Use of Facilities

1. Grantee agrees that the Grantee shall use the property acquired or developed with Grant Moneys under this Contract only for the purpose for which the State Grant Moneys were requested and no other use of the property shall be permitted except by specific act of the Legislature.

2. Grantee shall use the property for purposes for which the Grant was made and shall make no other use or sale or other disposition of the property, except as consistent with the Act and authorized by the State. This Agreement shall not prevent the transfer of the property from the Grantee to a public agency, if the successor public agency assumes the obligations imposed by this Agreement. If the use of the property is changed to a use that is not permitted by the Act, or if the property is sold or otherwise disposed of, and amount equal to (1) the amount of the grant (2) the fair market value of the real property, or (3) the proceeds from the sale or other disposition, whichever is greater, shall be reimbursed to the State, unless approved by the Executive Director of State to be used for related purposes within the Grantee's jurisdiction.
3. Grantee agrees to maintain and operate the property acquired, developed, rehabilitated or restored with Grant Moneys for a period that is commensurate with the type of project and the proportion of State funds and local matching funds or property allocated to the capital cost of the project.

J. Nondiscrimination

1. The Grantee shall not discriminate against any person on the basis of sex, race, color, national region, age, religion, ancestry, or physical handicap in the use of any property or facility acquired or developed pursuant to this Contract.
2. The Grantee shall not discriminate against any person on the basis of residence.
3. All facilities shall be open to members of the public generally, except as noted under the special provisions of this Contract.

K. Application Incorporation

The Application and any subsequent change or addition approved in writing by the State is hereby incorporated in this Contract as though set forth in full in this Contract.

L. Severability

If any provision of this Contract or the application thereof is held invalid, that invalidity shall not affect other provisions or applications of the agreement which can be given effect without the invalid provision or application, and pursuant to this provision of this Contract, are severable.

Memorandum

To : The Conservancy
The Advisory Committee

December 13, 2021

From :  Joseph T. Edmiston, FAICP, Hon. ASLA, Executive Director

Subject: **Consideration of resolution authorizing a General Fund grant to the City of Los Angeles for Sepulveda Basin River Restoration Planning within the Sepulveda Basin Master Plan.**

Staff Recommendation:

That the Conservancy adopt the attached resolution authorizing a grant of General Funds to the City of Los Angeles for Sepulveda Basin River Restoration Planning within the Sepulveda Basin Master Plan in the amount of \$950,000.

Legislative Authority:

Section 33204 of the Public Resources Code; Budget Act of 2021, Section 64 Item 3810-101-0001.

Background:

On September 23, 2021, Governor Newsom signed a budget trailer bill that included a \$10 million allocation to the Santa Monica Mountains Conservancy to help improve climate resiliency and the protection of the Los Angeles River Watershed as part of the Revitalization Plan developed by the Upper Los Angeles River and Tributaries (ULART) Working Group pursuant to Section 33220 of the Public Resources Code. The funding is designated for projects that include nature-based watershed management, open space, multiple benefits, safe access, alignment with community needs and feedback, alignment with funding sources, reduction and management of flood risks to communities, and provide culture, arts, and education. Conservancy staff have consulted with partner agencies, non-profit organizations, local tribes, and other stakeholders to identify projects which could be

implemented immediately as the total allocation amount is only available for encumbrance or expenditure until June 30, 2024.

The attached application from the City of Los Angeles proposes a project that will restore the Sepulveda Basin and improve the habitat, recreational access, public safety, connectivity, and natural function. The Sepulveda Basin River Restoration Planning project was initially proposed within an Opportunity Area (OA), in the Conservancy's adopted 2020 ULART Plan. Recently, The River Project conducted a Sepulveda Basin River Restoration Feasibility Study, funded by the Conservancy, that identified how the entire basin, including developed spaces, could be better integrated through process driven river restoration planning. In November, the ULART Working Group considered several options for projects that could be funded out of this allocation, and the subject project is one of the projects they recommended that the Conservancy consider funding. The proposed grant is designed to meet the short timeframe required. The Working Group's recommendations represent approval for projects from a wide range of stakeholders and community advocates.

The feasibility of the placement and proposed type of projects will be determined during the Feasibility/Conceptual Study Phase. The grant funding requested herein constitutes a portion of the total Study cost, and this scope will be limited in the Feasibility Study Phase for the Vision Plan that is compatible with OAs 814 and 821 identified in the ULART Plan.

This Project Planning and Design project will propose multiple benefit projects in the Basin that seek to improve connectivity to the surrounding communities and improve movement within the Basin to be designed as an early stand-alone phase of the Vision Plan which will facilitate the use of the Basin for the 2028 Olympics. The recommended River and new recreational changes within the Basin are to be formulated in accordance with the EA guidelines, as subsequent phases which will be mapped during the feasibility study to achieve the long-term Vision Plan in the most rational and achievable phasing.

The purpose of the Sepulveda Basin Master Plan is intended to result in a long term design goal for the future of the Sepulveda Basin that builds on the values of the Corps' 2011 Sepulveda Dam Basin Master Plan and Environmental Assessment, proposes creative changes that can be implemented in phases to improve the visitor experience, maximizes opportunities for recreation, improves access throughout the Basin, restores natural function to the River and its tributaries, and improves the flood control function of the Basin. The early implementation phases of the Master Plan will mark the initial transformation of the Basin into an international destination for Los Angeles during the Olympics and thereafter.

The Sepulveda Basin Master Plan will engage local communities, the greater Los Angeles area, and an international audience. The City will work closely with the community and the many stakeholders of the Basin to develop the Vision for the Basin, and to define the innovative projects. This Master

Plan will also build on other design efforts that have preceded this work. The ULART grant will fund the Feasibility/Conceptual Study Consultant costs.

Typically, Conservancy staff and grantees have several weeks to refine and coordinate the scope, timeline, budget, and other aspects of grant applications, and many projects are under development for years before being submitted for funding. Therefore, the attached resolution authorizes the Executive Director to make minor modifications to the grant proposal to ensure that the objectives of the program are met.

Consideration:

The grant application from the City of Los Angeles for Sepulveda Basin River Restoration Planning within the Sepulveda Basin Master Plan is for \$950,000.

Attached:

[Sepulveda Basin Grant Application Package](#)

[SBMP one pager final_211115](#)

SANTA MONICA MOUNTAINS CONSERVANCY GRANT APPLICATION				
Project Name: Sepulveda Basin Vision Plan		Amount of Request: \$950,000 Total Project Cost: \$3,500,000 Matching Funds:		
Applicant Name: City of Los Angeles, Bureau of Engineering		Lat/Long: 34.1787333/ - 118.4775467		
Applicant Address: 1149 S. Broadway, Suite 700 Los Angeles, CA 90015-2213		Project Address: 6350 Woodley Ave, Van Nuys, CA 91436		
		County	Senate District	Assembly District
		Los Angeles	27	45
Phone: (213) 485-4935 Email: Gary.Lee.Moore@lacity.org		Tax ID: 95- 6000735		
Grantee's Authorized Representative: Gary Lee Moore, PE, City Engineer <i>Name and Title</i> (213) 485-4935 <i>Phone</i>				
Overhead Allocation Notice: <input checked="" type="checkbox"/> Any overhead costs will be identified as a separate line item in the budget and invoices. <input checked="" type="checkbox"/> The Conservancy encourages grantees to reduce overhead costs including vehicle and phone expenses. <input checked="" type="checkbox"/> The overhead allocation policy has been submitted prior to, or with, the grant application. Outreach and Advertising Requirement: <input checked="" type="checkbox"/> Applicant has read the staff report and board resolution regarding contract policies. <input checked="" type="checkbox"/> Applicant has adopted contract policies for the purpose of increasing outreach and advertising to disadvantaged businesses and individuals. <i>All check boxes must be checked</i>				
Brief Project Description: See Attachment No. 1				
Tasks / Milestones:		Budget:	Completion Date	
See Attachment No. 2				

For Acquisition Projects: APN(s): N/A Acreage: N/A	
I certify that the information contained in this Grant Application form, including required attachments, is accurate.	
_____	_____
<i>Signature of Authorized Representative</i>	<i>Date</i>
STATE OF CALIFORNIA ♦ THE NATURAL RESOURCES AGENCY	

Attachment No. 1 Project Description

At over 2,000 acres, the Sepulveda Basin is the largest open space in the San Fernando Valley and the second largest in the City of Los Angeles. The Basin is an important hub for outdoor recreation, containing many important community facilities including Lake Balboa, active recreational playing fields, golf courses, a model airplane facility, and the Japanese Garden, to name a few. It also provides critical habitat for plants and wildlife. It is first and foremost a flood risk management facility owned by the Corps of Engineers, and it is managed by the Corps to fulfill this function. A critical flood control dam sits at the eastern end of the Basin. The Corps has leased areas to the City and other public and private entities for recreation and other uses, which includes a City of Los Angeles wastewater treatment plant, the Tillman Water Reclamation Plant.

The Sepulveda Basin is not living up to its full potential. Los Angeles is one of the most park poor large cities in the United States according to the Trust for Public Land. The Basin is directly adjacent to two communities defined as being high, or very high need in the Los Angeles County Parks Needs Assessment. Yet large areas of Basin remains undeveloped and underutilized. This includes approximately 325 acres of land designated as Inactive and/or Future Recreation in the Sepulveda Dam Basin Master Plan and Environmental Assessment (EA) from the U.S. Army Corps of Engineers, dated September 2011. In addition, 250 acres of land is designated as being either Environmentally Sensitive or Vegetative Management. These underutilized spaces within the Basin have become locations for negative activity, resulting in several large fires that have broken out over the past several years. However, under the Corps' EA, these underutilized spaces can be turned into amenities with new recreational facilities as well as trails, restrooms, benches and signage. This would further bolster the Basin's appeal as a regional park, which would be one of the most accessible in the City, as it has two adjacent Orange Line stations.

The Sepulveda Basin is also the focus of several important initiatives. It will serve as the Valley Sports Park for the 2028 Olympics and is bisected by the Los Angeles River in a critical location for its restoration. Opportunities abound to enlarge the footprint of the River and tributaries within the Basin to restore hydrologic function through naturalized restoration, and in some cases, remove concrete channels sidewalls where flood capacity is sufficient. Through restoration, the basin can integrate the River to improve habitat, recreational access, public safety, connectivity, and natural function. These efforts can be coordinated so they further enhance the basin and leave a lasting legacy for residents of the San Fernando Valley. Now is a critical moment to reimagine the Sepulveda Basin as the crown jewel of the San Fernando Valley through the creation of a master plan.

The feasibility of the placement and proposed type of projects will be determined during the Feasibility/Conceptual Study Phase. The grant funding of \$950,000 will be used in the Feasibility Study Phase for the Vision Plan as it relates to ULART funding.

The Vision Plan seeks to propose multiple benefit Projects in the Basin that can address Opportunity Areas 821 and 814 indicated in the Upper Los Angeles River and Tributaries Revitalization Plan (ULART). The projects that will be identified during the Feasibility Study will seek to improve connectivity to the surrounding communities and improve movement within the Basin to be designed as an early stand-alone phase of the Vision Plan which will facilitate the use of the Basin for the 2028 Olympics. The other changes to the Basin including River changes and new recreational projects which are to be formulated in accordance with the EA guidelines

as subsequent phases which will be mapped during the feasibility study to achieve the long-term Vision Plan in the most rational and achievable phasing.

The Vision Plan will

- 1) Audit existing land uses, landscaping, habitat value, and uses within the Basin and identify areas that can be enhanced.
- 2) Provide a framework for how future investments, such as the Olympic facilities and LA River restoration, can tie into the overall vision for the Basin.
- 3) Provide a framework for improving mobility and wayfinding to access the Basin, and to move around and within the Basin for cars, pedestrians, and cyclists.
- 4) Outline a decision-making framework between the different government agencies with purview over the Basin, including the Army Corps, the County of Los Angeles, and the City of Los Angeles.
- 5) Increase recreational opportunities for long term use while preserving and enhancing wildlife and habitat areas.
- 6) Through a River focused planning process, integrate improved habitat, recreational access, public safety, and connectivity, and restore natural function to the LA River and the tributaries within the Basin.

The world class Vision Plan is intended to result in a long term design goal for the future of the Sepulveda Basin that builds on the values of the Corps' 2011 Sepulveda Dam Basin Master Plan and Environmental Assessment, proposes creative changes that can be implemented in phases to improve the visitor experience, maximizes opportunities for recreation, improves access throughout the Basin, restores natural function to the River and its tributaries, and improves the flood control function of the Basin. The early implementation phases of the Vision Plan will mark the initial transformation of the Basin into an international destination for Los Angeles during the Olympics and thereafter.

The Vision Plan will engage local communities, the greater Los Angeles area and an international audience. The City will work closely with the community and the many stakeholders of the Basin to develop the Vision for the Basin, and to define the innovative projects. This Vision Plan will also build on other design efforts that have preceded this work.

Development in the Basin may not impede Corp of Engineers Project Operations. The Sepulveda Dam Basin Proposed Land Use Classification Map within the EA identifies the land use classifications the Corps has approved. Projects that are identified shall meet the use classifications identified in the EA. Projects must also demonstrate a need, economic feasibility, and financial capability that takes into account long term maintenance, to the maximum extent feasible.

The primary constraint on land uses within the Basin is the periodic inundation of portions of the Basin for downstream flood risk management. The frequency, extent, and duration of flood inundation must be considered in the management and appropriate use of the Basin. The Projects should work around this constraint and highlight the importance of the Basin for flood risk management. As part of this EA, the filling frequency curves have been calculated and maps have been developed that illustrate flood stage elevations for the 10-, 50-, and 100-year floods. Areas within the Basin have been identified within the EA according to topographic analysis reflecting the level of flood inundation and activities and structures that may occur within each area of the Basin.

Per the guidelines of the EA, the Vision Plan tasked to the Consultant, must reflect the most current advances in restoration ecology and wildlife management in the context of the Corps' mission, regulations, and guidance. Therefore, any proposed addendums or supplements to the EA must be in alignment with the Corps mission, regulations, and guidance.

The Basin is identified by the Corps according to land use classifications, which are dictated by the Corps' policies and guidance. The Corps' 2011 Master Plan classifies land at the Basin in six (6) land use classifications: 1) Project Operations; 2) Recreation; 3) Environmentally Sensitive; 4) Multiple Resource Management - Recreation - Low Density; 5) Multiple Resource Management - Vegetative Management; and 6) Multiple Resource Management - Inactive and/or Future Recreation. The Corps' Master Plan provides guidance for balancing flood risk management requirements, recreation opportunities, and preservation of natural resources for current and future generations.

Attachment No. 2: Tasks, Milestones, Budget

The ULART grant will fund the Feasibility/Conceptual Study Consultant costs. The intent of the Feasibility/Conceptual Study is described in the Project Description (Attachment No. 1). The Study is anticipated to complete in September 2023, ahead of the Grant deadline.

Task Activity	Time	Completed	
Task Order Preparation and Advertisement	2 months		
Task Order Bid Period	1 month	2/1/2022	
Consultant Evaluations Interviews	1 month	3/1/2022	
Board Report Preparation and Approval	2 months	5/1/2022	
Project Notice to Proceed (Environmental and Feasibility/Conceptual Master Plan Study)	Milestone	5/1/2022	
Feasibility /Conceptual Master Plan Study ¹	16 months	9/1/2023	
CEQA/NEPA Environmental Review and Approval ²	18 months - 24 months	11/1/2024	
Total Duration³	36 months		
1. Feasibility/Conceptual phase overlaps with Environmental Review phase 2. CEQA/NEPA Environmental Review assumes to start six (6) months after Notice to Proceed 3. This duration assumes the more conservative case for the Environmental Review.			
Task Activity	Fees	ULART	Other Sources
Feasibility/Conceptual Study ⁴	\$2,000,000	\$950,000	\$1,050,000.00
Environmental Clearance	\$600,000		\$600,000.00
BOE City Staff Costs /Direct Costs	\$400,000		\$400,000.00
Contingency	\$500,000		\$500,000.00
Project Total Cost	\$3,500,000	\$950,000	\$2,550,000.00

4. The ULART grant will be used towards consultant costs and not BOE staff costs.

Grantee Data Sheet

Print Form



State of California
The Natural Resources Agency
Santa Monica Mountains Conservancy

5750 Ramirez Canyon Road
Malibu, California 90265
Phone: 310-589-3200
Fax: 310-589-3207
www.smmc.ca.gov

Date: 12/1/2021

☒ New ☐ Revised

Grantee Name: Gary Lee Moore

Address: 1149 S. Broadway, Suite 700

State/Province: CA

Zip/Postal Code: 90015-2213

Tax ID Number: 95-6000735

Phone: (213) 485-4935

Fax:

Project Name: Sepulveda Basin Vision Plan

Primary Contact Information

Name (1): Gary Lee Moore, PE, City Engineer

Address: 1149 S. Broadway, Suite 700

State/Province: CA

Zip/Postal Code: 90015-2213

Phone (1): (213) 485-4935

Phone (2):

Fax:

Email: Gary.Lee.Moore@lacity.org

Information

Will administrative/overhead costs be included? No

If yes, is the overhead policy attached to this sheet? Not App

Will vehicle costs be included? No

If yes, is the vehicle policy attached to this sheet? No

Will cell phone costs be included? No

If yes, is the phone policy attached to this sheet? Not App

☐ I have completed and submitted the STD 204 Payee Data Record form.

☒ I have read and accepted the policies and procedures within the Santa Monica Mountains Conservancy Grant Administration Manual.

☒ I am aware that the Santa Monica Mountains Conservancy has urged a reduction of costs associated with overhead, cell phone, and vehicle charges.

*If a reduction in the above costs has been made, please document the reductions and attach to this data sheet.

Name (2): Joanne Zhang

Address: 1149 S. Broadway, Suite 700

State/Province: CA

Zip/Postal Code: 90015-2213

Phone (1): (213) 485-4935

Phone (2):

Fax:

Email: Joanne.Zhang@lacity.org

Notes:

The STD 204 Payee Data Form is in progress

Signature Field

TRANSMITTAL NO. 2

Project Type: **PLANNING** (OAs_814; 821; 851; 872)

Sepulveda Basin River Restoration Planning PP&D

UPPER LOS ANGELES RIVER AND TRIBUTARIES REVITALIZATION PLAN

Opportunity Area Summary

Project: LAR Basin Greening and Recreation; OA_821

Footprint (acres or feet): N/A (Point)

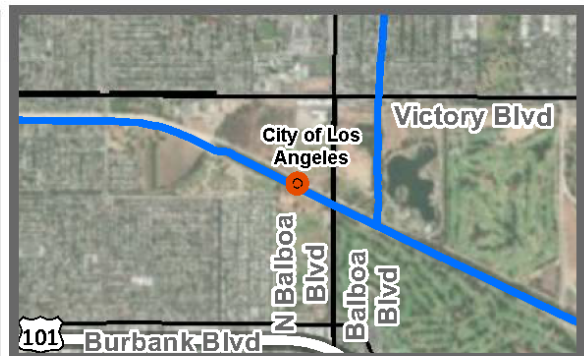
Tributary: **Bull Creek**

Public ownership (%): 100

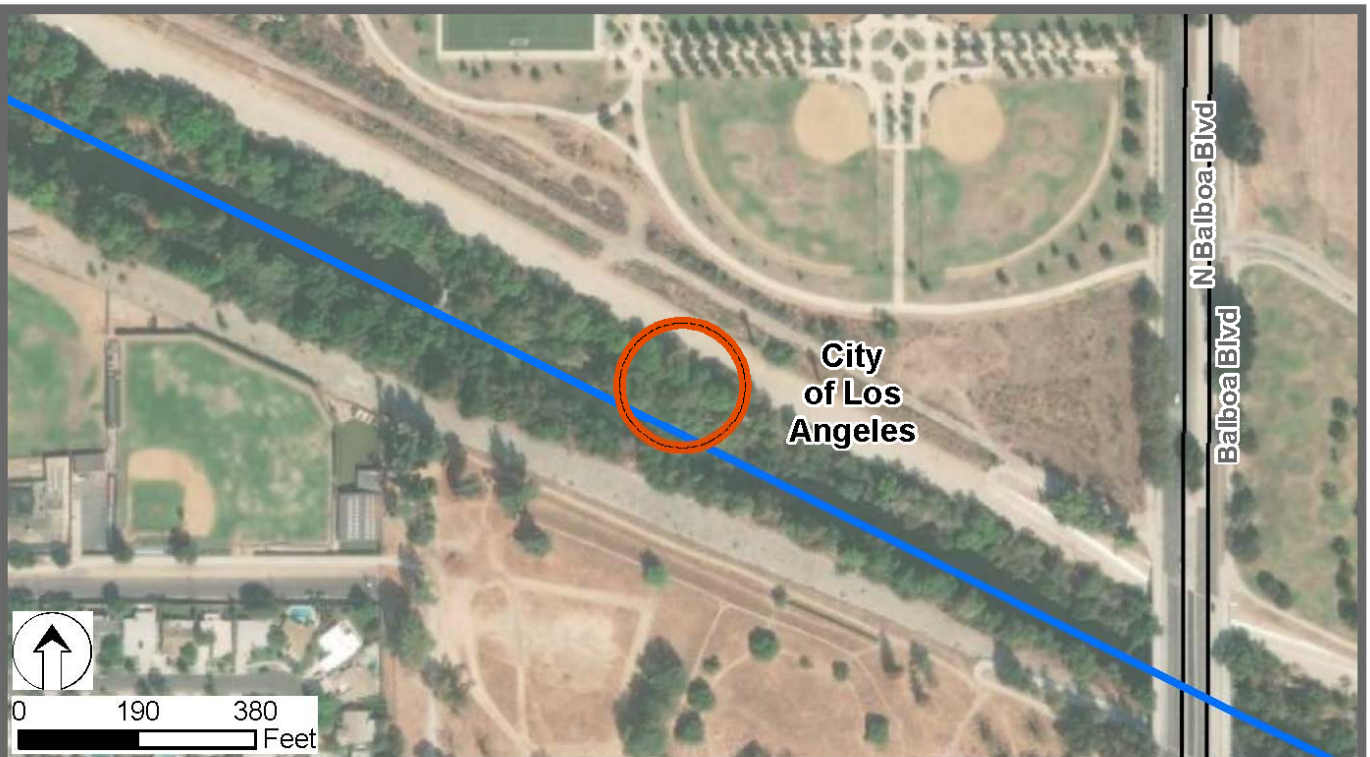
Project suggested by: Public (WebTool Survey)

Primary Typology: n/a

Secondary Typology: n/a



Cities (%): Los Angeles: 100



Featured Opportunity Other Opportunities LA River/Tributaries City Boundary

Upper Los Angeles River and Tributaries (ULART) Implementation Recommendations

Sepulveda Basin River Restoration Planning PP&D (City of Los Angeles—\$950,000)

Multiple OAs within Sepulveda Basin have been identified that present a number of multi-benefit solutions to the mainstem of the LA River and several associated tributaries. This project planning and design project would seek to prioritize river restoration opportunities within an upcoming Master Plan process that the City of Los Angeles is ready to initiate. Recently, The River Project conducted a Sepulveda Basin Feasibility Study, funded by SMMC, that identified how the entire basin, including developed spaces, could be better integrated through process driven river restoration. Benefits of the restoration would be significant and could be on display during the 2028 Olympic Games in Los Angeles.

Key Elements in the project include:

- Prioritizing river restoration efforts within the 2022-23 Sepulveda Basin Master Plan;
- Recommendation of solutions that restore geomorphic and ecosystem functionality to the River and riparian corridor within the Basin and could remove concrete and provide other modifications;
- Add capacity for stormwater detention to reduce downstream flood hazards and increase potential for groundwater recharge;
- Improve the recreational interface with the River and its tributaries, to enhance access and expand the existing River Recreation Zone and other passive recreational amenities compatible with nature.



December 13, 2021

Resolution No. 21-84

RESOLUTION OF THE SANTA MONICA MOUNTAINS CONSERVANCY
AUTHORIZING A GENERAL FUND GRANT TO THE CITY OF LOS ANGELES FOR
SEPULVEDA BASIN RIVER RESTORATION PLANNING WITHIN THE SEPULVEDA
BASIN MASTER PLAN

WHEREAS, the Santa Monica Mountains Conservancy is authorized to award grants to cities, counties, recreation and park districts pursuant to Section 33204 of the Public Resources Code;

WHEREAS, the State of California has authorized an expenditure of General Funds by the Santa Monica Mountains Conservancy for Upper Los Angeles River and Tributaries projects in Section 64 of the Budget Act of 2021, Item 3810-101-0001;

WHEREAS, the proposed project is consistent with the Conservancy's Strategic Objectives to implement the Santa Monica Mountains Comprehensive Plan, and the Rim of the Valley Trail Corridor Master Plan, further cooperation with local governments in the region to secure open space and parkland, expand education, public access, and resource stewardship components in a manner that best serves the public, protects habitat, and provides recreational opportunities, and develop long term capital improvement and maintenance plans;

WHEREAS, the proposed project is consistent with the Santa Monica Mountains Comprehensive Plan, the Rim of the Valley Trail Corridor Master Plan, and the Upper Los Angeles River and Tributaries Revitalization Plan;

WHEREAS, the proposed project protects land and water resources; and

WHEREAS, the proposed action is exempt from the provisions of the California Environmental Quality Act (CEQA): Now

Therefore Be It Resolved, That the Santa Monica Mountains Conservancy hereby:

1. FINDS that the proposed action is consistent with the Santa Monica Mountains Comprehensive Plan, the Rim of the Valley Trail Corridor Master Plan, and the Upper Los Angeles River and Tributaries Revitalization Plan adopted by the Santa Monica Mountains Conservancy;
2. FINDS that the proposed action is consistent with the Conservancy's Strategic Objectives;

3. FINDS that the proposed action is exempt from the provisions of the California Environmental Quality Act (CEQA);
4. ADOPTS the staff report and recommendations dated December 13, 2021 for this item;
5. ADOPTS all of the preceding whereas clauses;
6. AUTHORIZES a grant of General Funds to the City of Los Angeles for Sepulveda Basin River Restoration Planning Project in the amount of \$950,000; and
7. AUTHORIZES the Executive Director to make necessary changes to the proposed scope and budget to accomplish the objectives of the Upper Los Angeles River and Tributaries Revitalization Plan General Funds funding; and
8. FURTHER AUTHORIZES the Executive Director to execute the grant agreement and to perform any and all acts necessary to carry out this resolution; without limiting the generality of the foregoing, such authority shall include those provisions that he shall determine in the exclusive exercise of his discretion are necessary to carry out the purposes of this resolution and to comply with the policies of the Conservancy, and to otherwise carry out the provisions of state law and regulations.

~End of Resolution~

I HEREBY CERTIFY that the foregoing resolution was adopted at a meeting of the Santa Monica Mountains Conservancy, duly noticed and held according to law on December 13, 2021 at various locations via videoconferencing, California.

Date: December 13, 2021



Executive Director